

# Print Server Application Guide

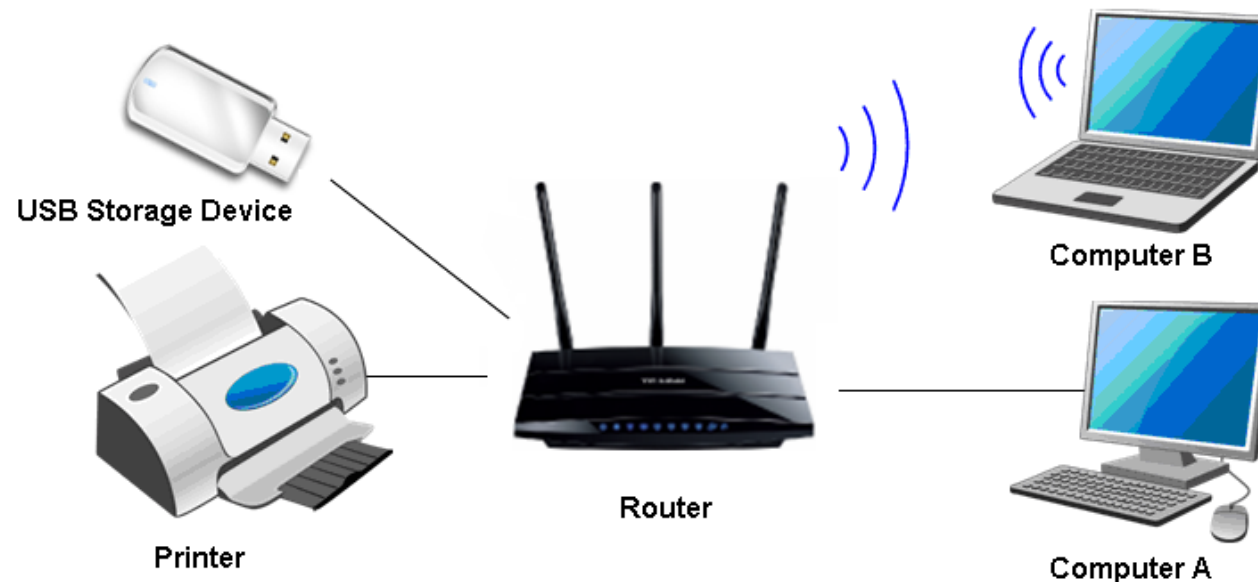
# CONTENTS

<b>Chapter 1. Overview .....</b>	<b>1</b>
<b>Chapter 2. Before Installation.....</b>	<b>2</b>
<b>Chapter 3. Installation for Windows OS.....</b>	<b>3</b>
<b>Chapter 4. Application for Windows OS .....</b>	<b>7</b>
<b>4.1 To Launch/Exit the TP-LINK USB Printer Controller .....</b>	<b>7</b>
<b>4.2 To Utilize the TP-LINK USB Printer Controller .....</b>	<b>8</b>
4.2.1 To Print .....	8
4.2.2 To Scan .....	11
4.2.3 Other functions/ settings .....	17
<b>Chapter 5. Installation for Mac OS.....</b>	<b>19</b>
<b>Chapter 6. Application for Mac OS .....</b>	<b>21</b>
<b>6.1 To Launch/Exit the TP-LINK USB Printer Controller .....</b>	<b>21</b>
<b>6.2 To Utilize the TP-LINK USB Printer Controller .....</b>	<b>22</b>
6.2.1 To Print .....	22
6.2.2 To Scan .....	25
6.2.3 Other functions/ settings .....	31
<b>Appendix: Troubleshooting.....</b>	<b>33</b>

# Chapter 1. Overview

Print server is a function embedded in your Router. It allows you to share your printer with computers that are connected to the Router.

## Typical Topology



### Note:

- (1) The client utility TP-LINK USB Printer Controller supports Windows 8 32/64 bit, Windows 7 32/64 bit, Windows Vista 32/64bit, Windows XP 32/64bit, and Mac.
- (2) Before connection, please check the **Printer Compatibility List** to verify whether your printer is supported by the Router. You can refer to **Appendix: Troubleshooting** for downloading the Printer Compatibility List.
- (3) Here in this guide, we take the configuration procedures of TL-WDR4300 for example.

## Chapter 2. Before Installation

**Before installing the print server, please note the following points:**

- ✓ Make sure you have already installed the printer's driver on your computer. Otherwise, please install it first.
- ✓ Any computer in your LAN must first install the software if it wants to share the print server via the Router.

**Before installing the print server, make sure you have the following devices and accessories:**

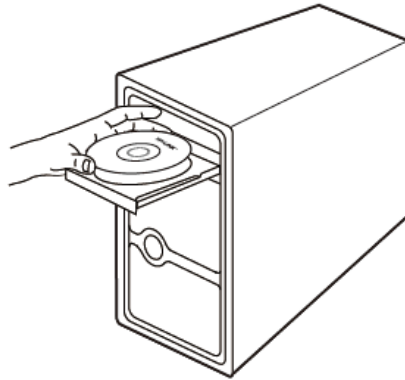
- ✓ TP-LINK Router with USB port which supports print server function
- ✓ USB printer and USB cable
- ✓ Computer with Windows XP/ Windows Vista/ Windows 7/ Windows 8/ Mac

 **Note:**

For Mac or Windows computers that do not have CD-ROM drive to run the resource CD, please download the relevant software from our website: [www.tp-link.com](http://www.tp-link.com). Please refer to [Appendix: Troubleshooting](#) for this.

## Chapter 3. Installation for Windows OS

1. Insert the Router's Resource CD into the CD-ROM drive.



2. Select your Router model and click **USB Printer Setup**.



3. Click **START**.



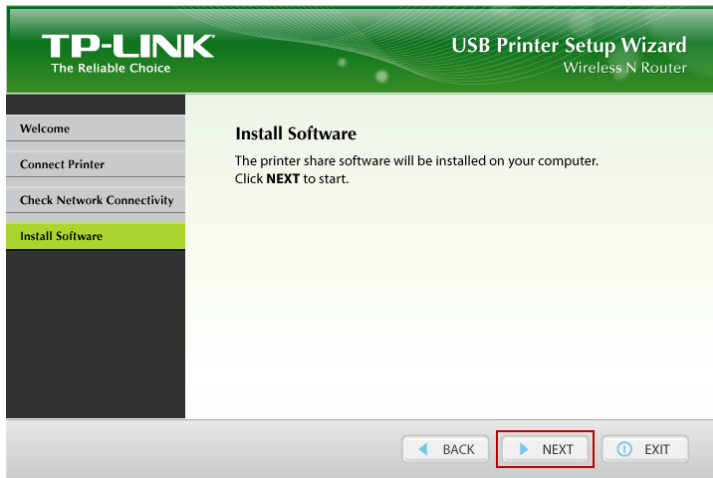
4. Connect your computer and printer to the Router step by step as instructed. Click **NEXT**.



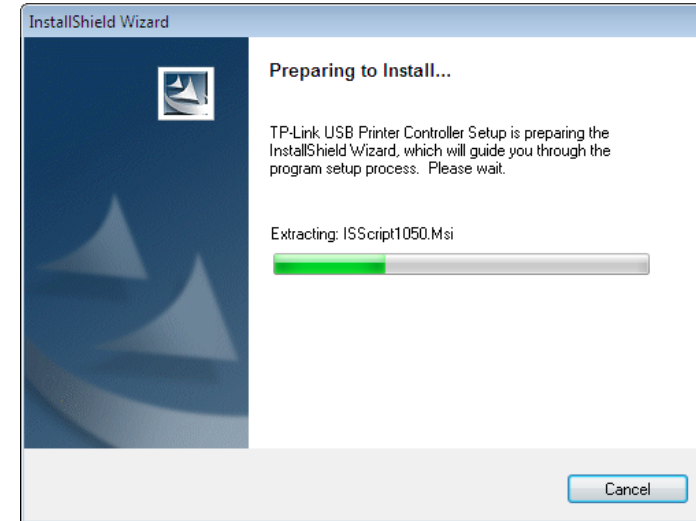
5. Check the LED lights and click **NEXT**.



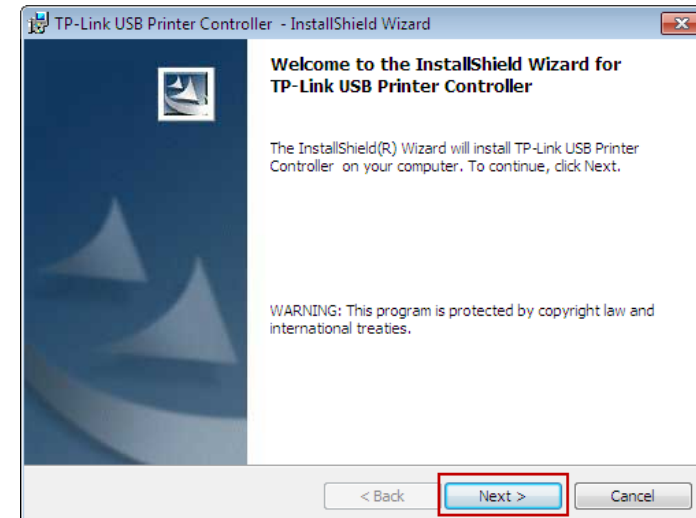
6. Click **NEXT** to start installing the printer share software.



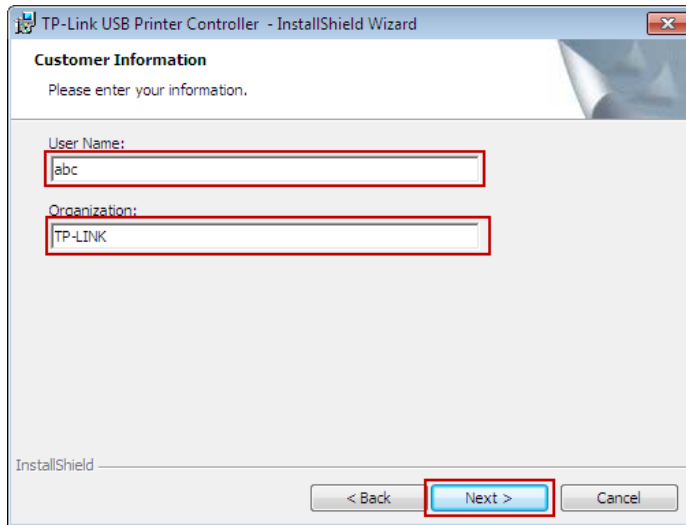
7. Please wait a moment for the installation preparation.



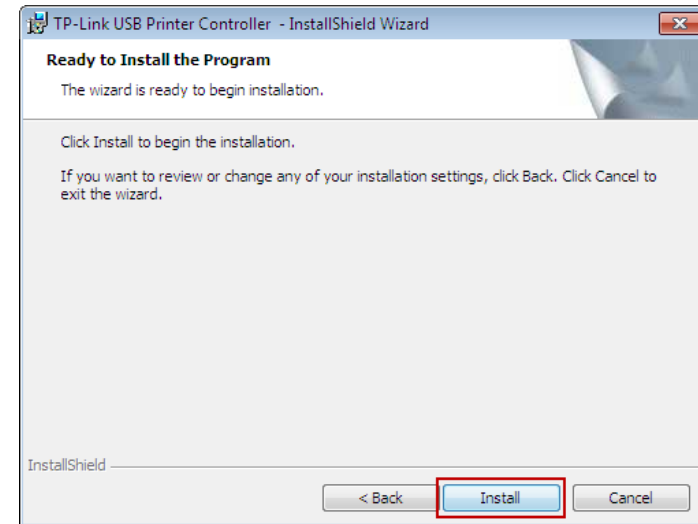
8. Click **Next** and go on to install the TP-LINK USB Printer Controller.



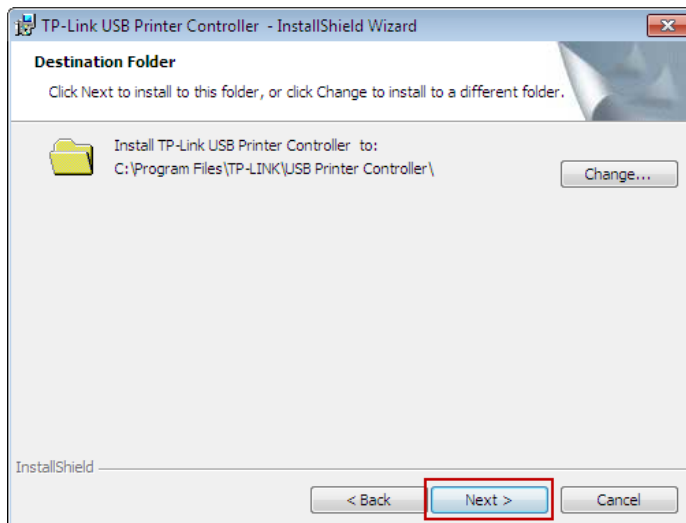
9. Please enter your information in the requested field and then click **Next**.



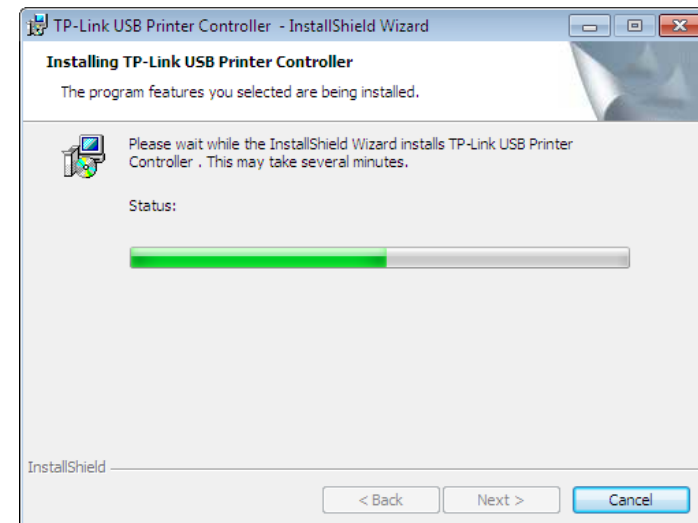
11. Click **Install** to begin the installation.



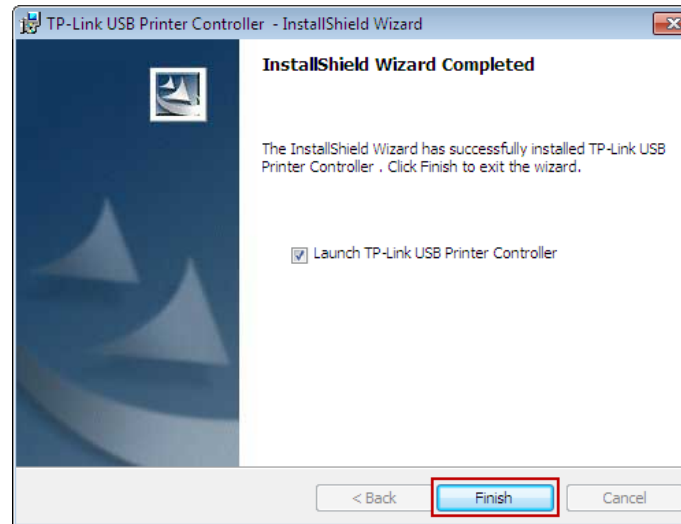
10. Click **Change...** to select another destination folder, or leave it default and click **Next**.



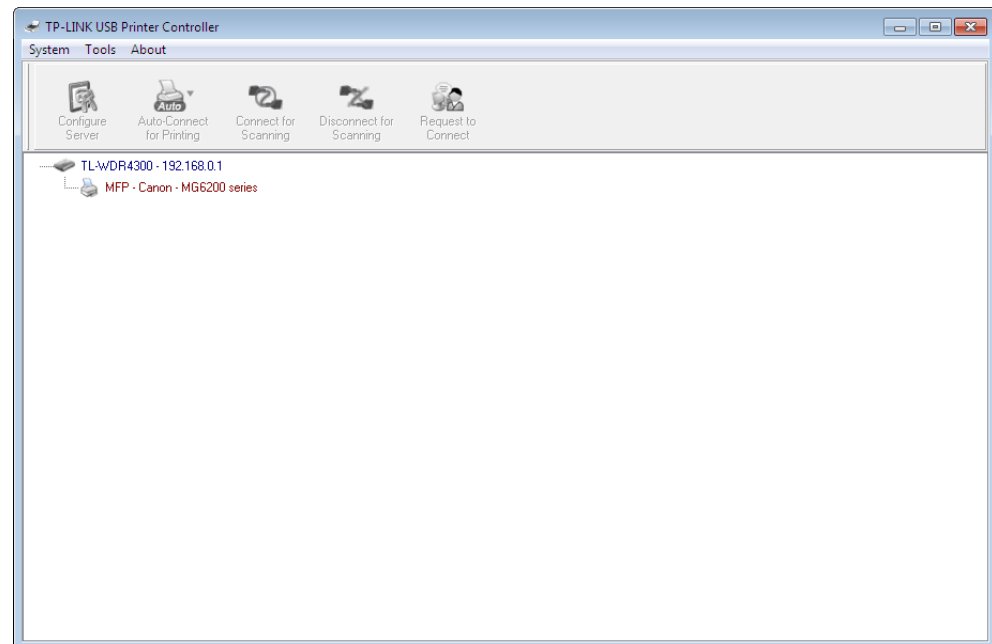
12. Please wait a while for the installation process.



13. Click **Finish** to complete and exit the **InstallShield Wizard**.



When the installation is completed, the TP-LINK USB Printer Controller will pop up, with whose help you can print documents via the Router now.




**Note:**


In your LAN, each computer that wants to share the print server should also install the **TP-LINK USB Printer Controller**. Please follow the previous steps to configure other computers in your LAN.

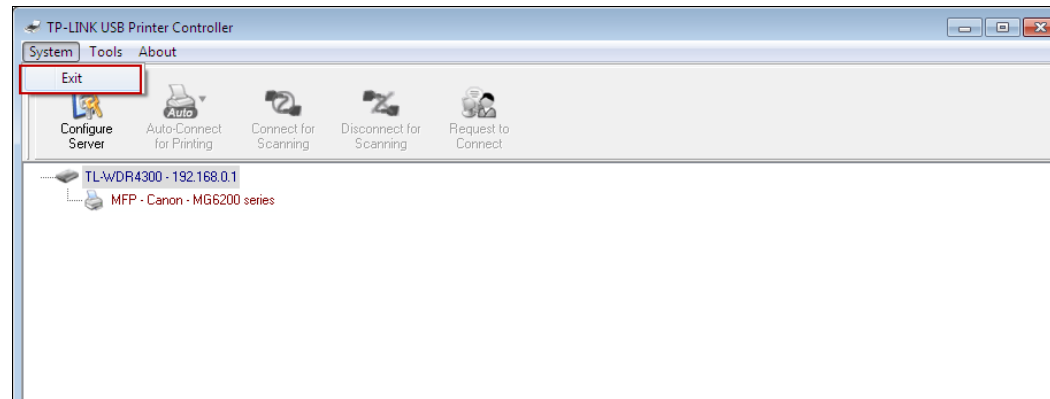


## Chapter 4. Application for Windows OS

TP-LINK USB Printer Controller is used to operate the USB Printer on your own computer. After successful installation, the icon  will appear on the desktop of your computer.

### 4.1 To Launch/Exit the TP-LINK USB Printer Controller

- To launch the USB Printer Controller, double-click the icon  on your desktop.
- To exit the USB Printer Controller, you have two ways:
  - Click **System->Exit** on the TP-Link USB Printer Controller.



- Right-click the icon  in the lower-right corner of your screen and then click **Exit**.



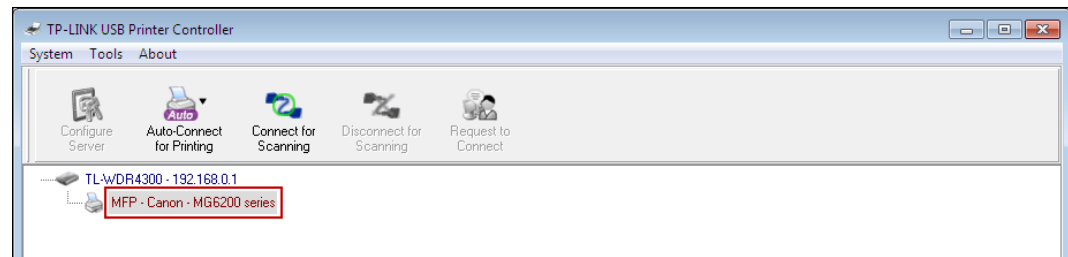
## 4.2 To Utilize the TP-LINK USB Printer Controller

### 4.2.1 To Print

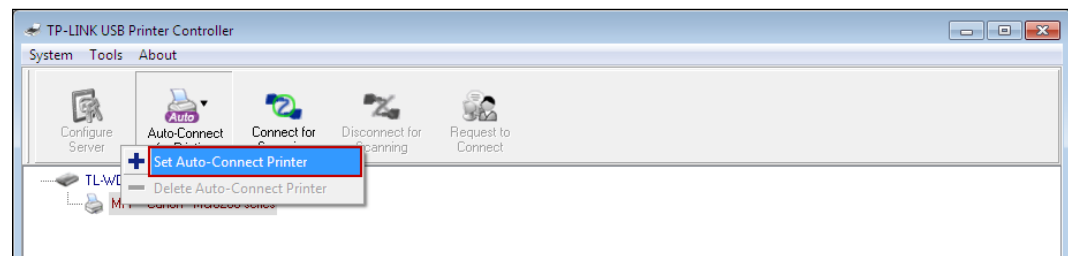
To print, first of all, you need to set your **Auto-Connect Printer**. After successful setting, you can execute your printing tasks automatically.

Please follow the steps below to set your auto-connect printer.

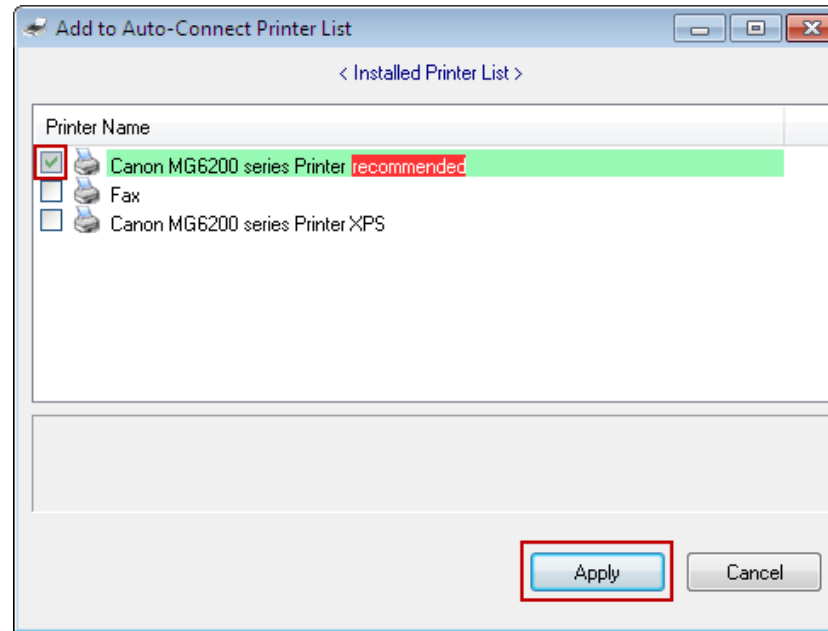
**Step 1:** Highlight the printer you want to set as auto-connect printer.



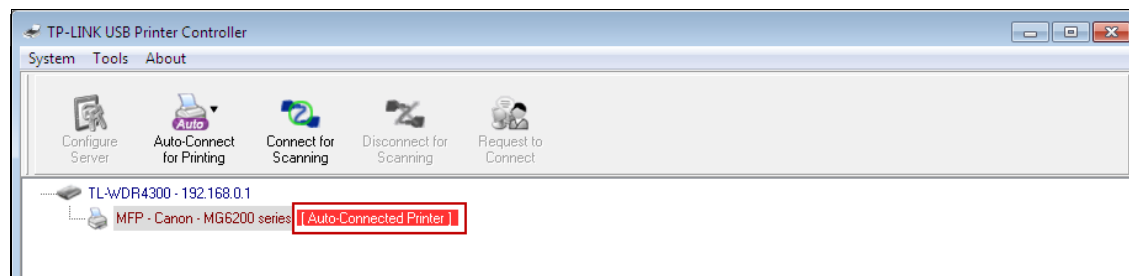
**Step 2:** Click the inverse triangle mark on the **Auto-Connect** for printing tab to pull down the list, where you can select **Set Auto-Connect Printer**.



**Step 3:** Tick the name of the printer you would like to set as auto-connect printer, and then click **Apply**.



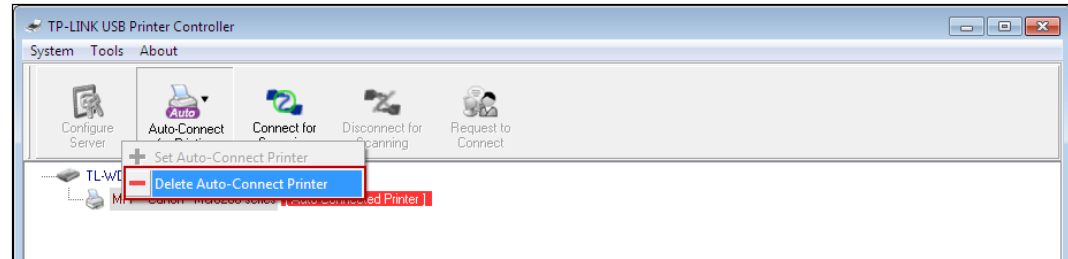
After successful setting, you will see the printer marked as **Auto-Connect Printer**. Then you can execute your printing task freely.



➤ If you want to disable your printer's auto-connect function, you can delete it.

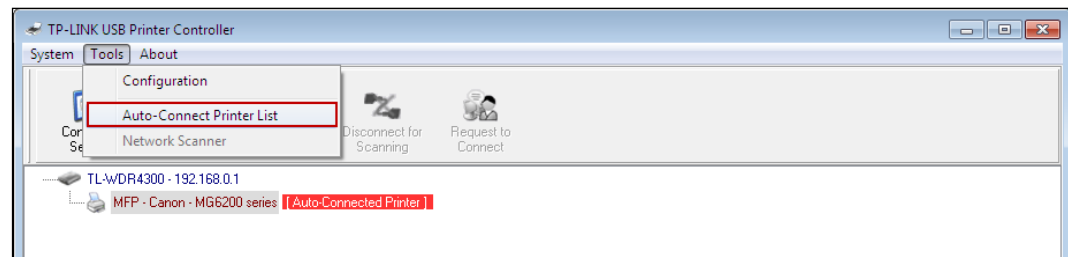
**Method One:**

Select **Delete Auto-Connect Printer** from the drop-down list of the **Auto-Connect for Printing** tab.

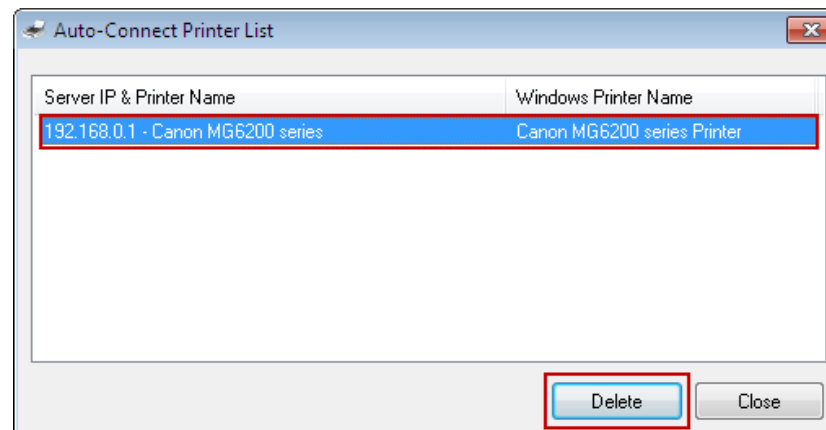


**Method Two:**

1. Go to **Tools->Auto-Connect Printer List**.



2. Highlight your auto-connect printer and then click **Delete**.

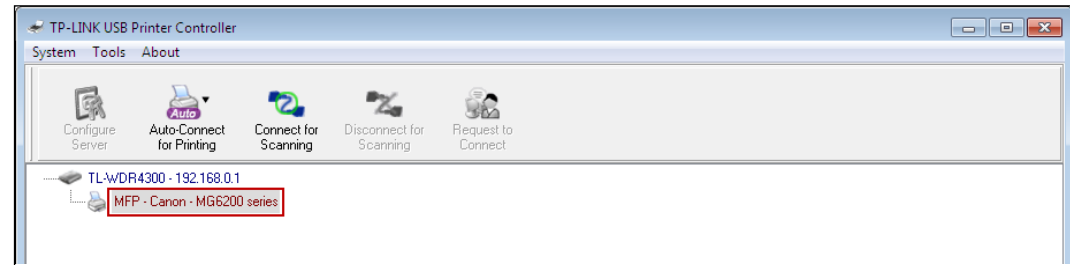


## 4.2.2 To Scan

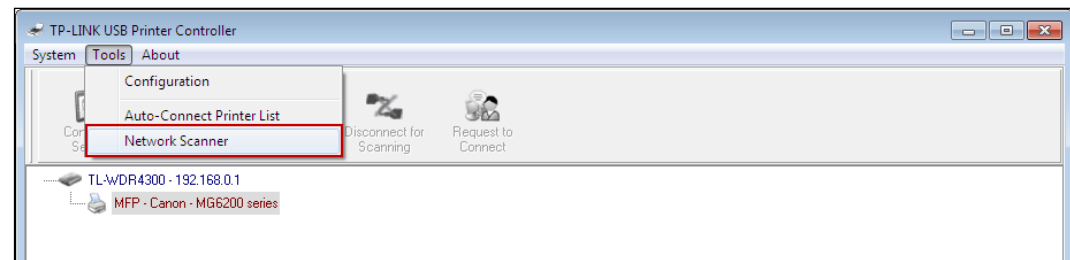
There are two methods available to realize the scanning function.

### Method One: Network Scanner

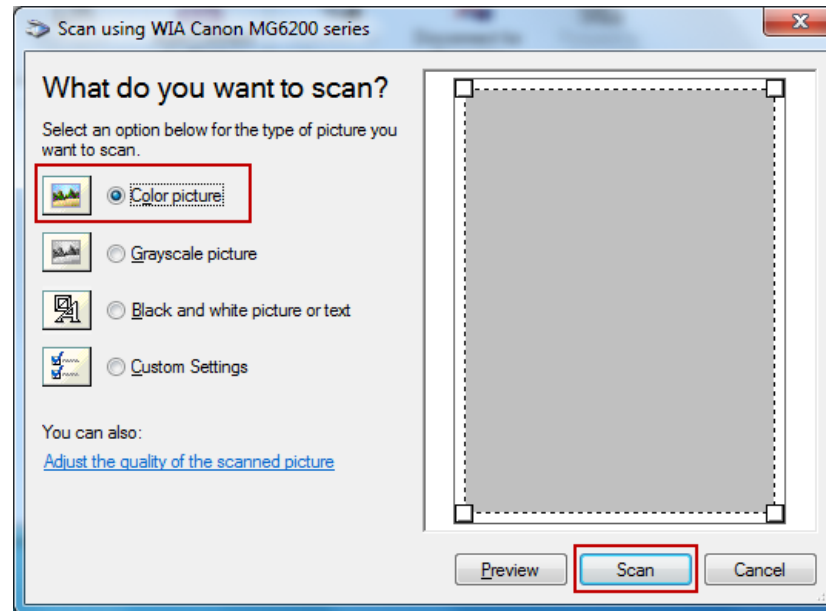
**Step 1:** Highlight your scanner or MFP.



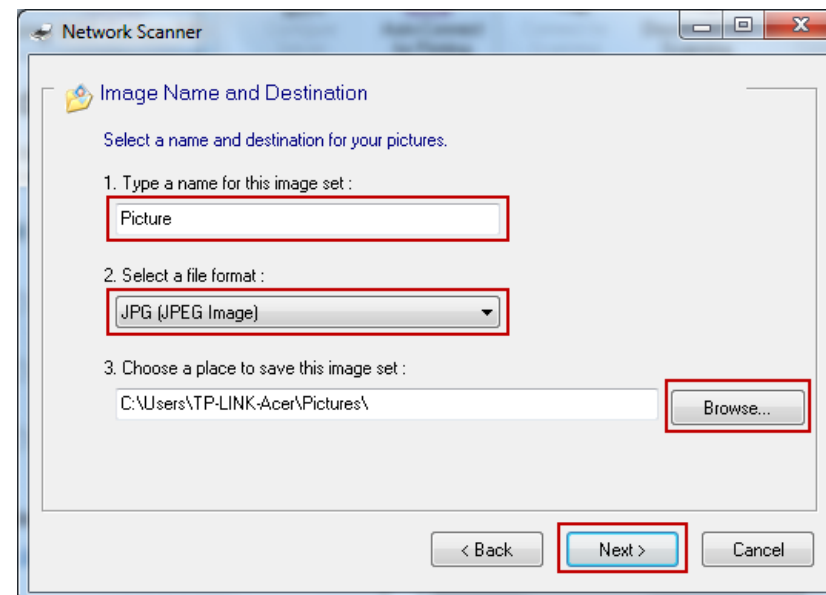
**Step 2:** Click *Tools* and then select *Network Scanner*.



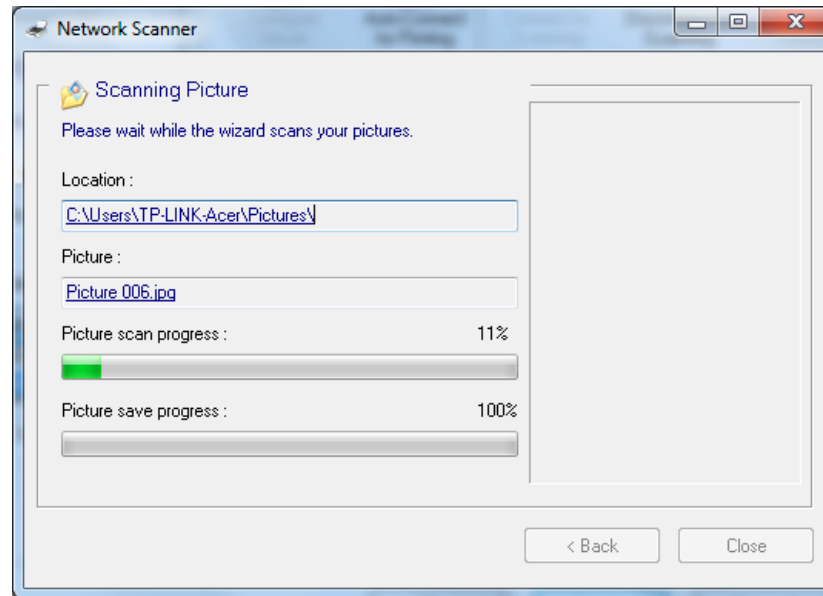
**Step 3:** Select the type of picture you want to scan, and then click **Scan**.



**Step 4:** Name the image set, select the file format, and choose the file destination by clicking **Browse...** or leave it default. Then click **Next**.

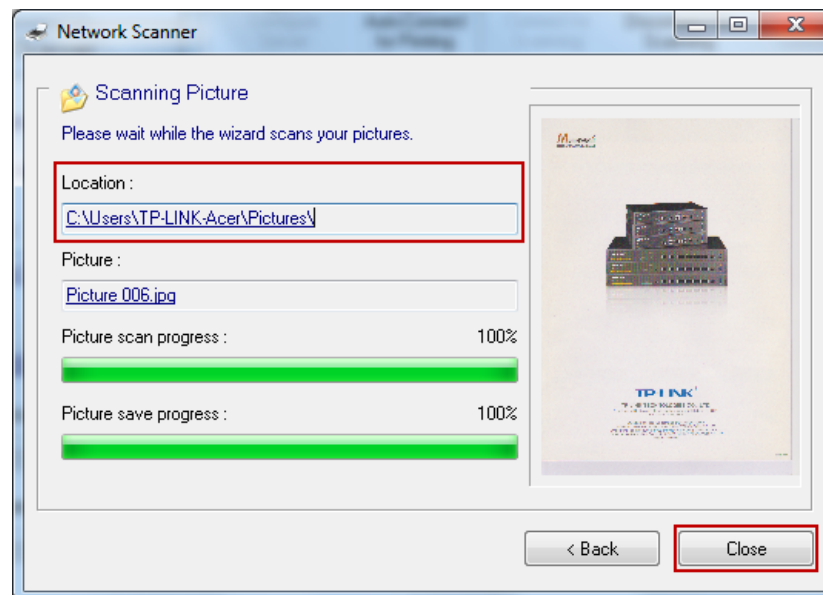


**Step 5:** Wait a while for the scan process.



**Step 6:** When it is 100% processed and saved, please click **Close** to complete it.

Then go to the location you've chosen in the previous **Step 4** and find your picture scanned.

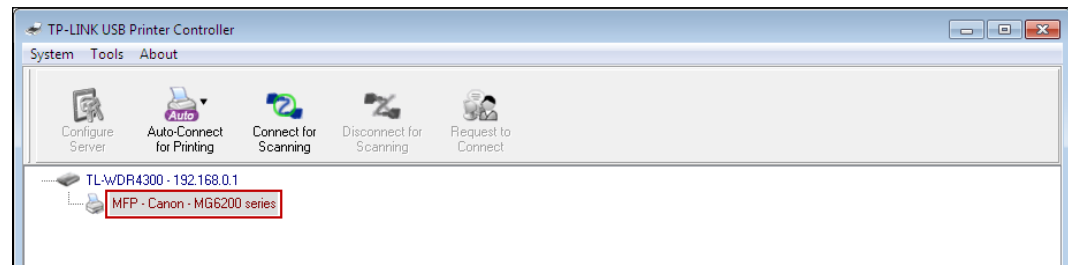


**Method Two: Connect for Scanning**

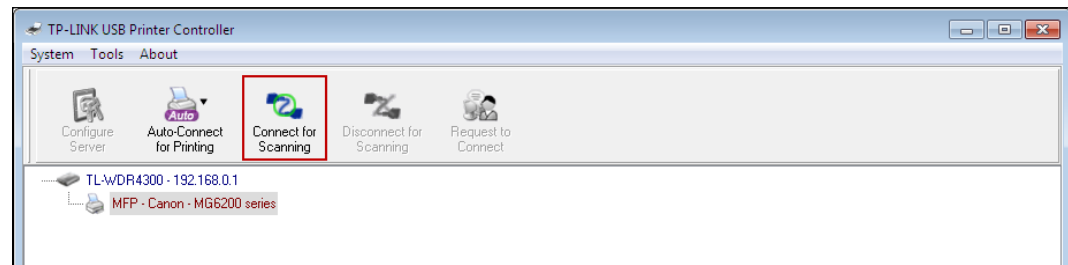
**Note:**

If you choose this method for scanning, no one else in your LAN can share the scanner or MFP to either print or scan, until you click the tab **Disconnect for Scanning** to release it or accept their **Request to Connect**.

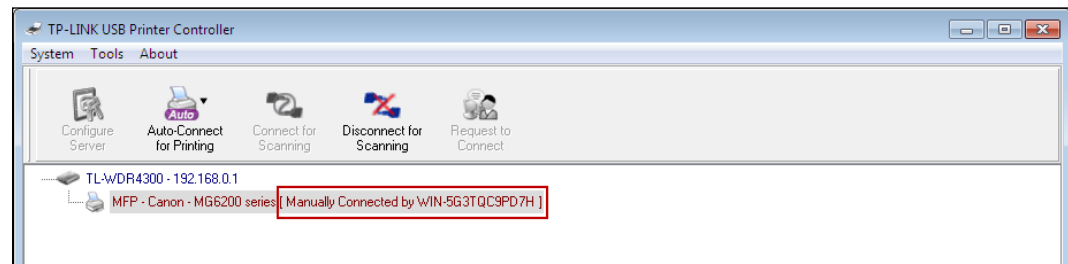
**Step 1:** Highlight your scanner or MFP.



**Step 2:** Click the tab **Connect for Scanning**.

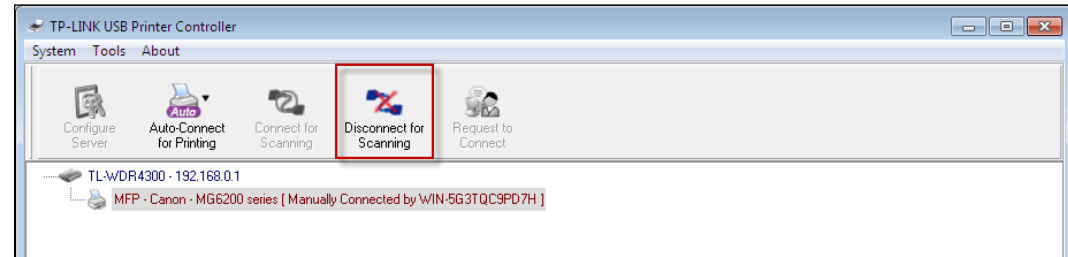


Successfully set and ready for scanning, it will display **Manually Connected by...**, when you can start your scanning task.





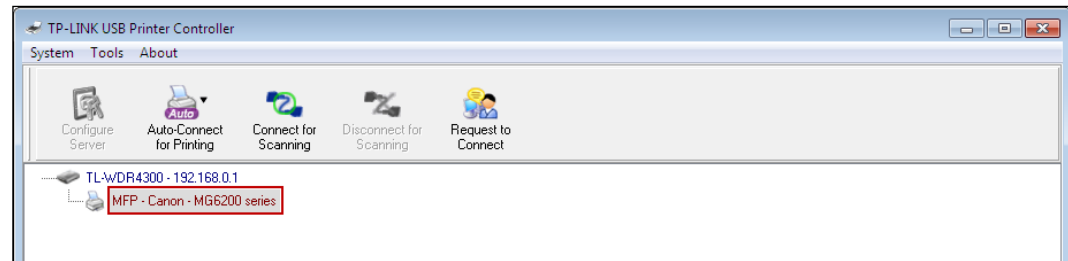
**Step 3:** After finishing your scanning task, please do remember to click the tab **Disconnect for Scanning** to release the scanner or MFP.



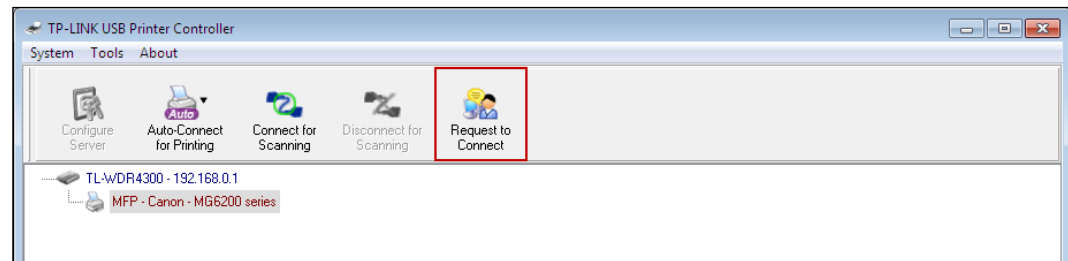
➤ **Request to Connect**

When one computer in your LAN **Connects for Scanning**, it is occupying the scanner or MFP; then if you would like to use the printer as well, you will have to **Request for Connect**.

**Step 1:** Highlight the scanner or MFP you want to share for printing or scanning.



**Step 2:** Click the tab **Request to Connect**.



**Step 3:** You will be prompted a window that transmits your request. Please wait patiently for the reply.



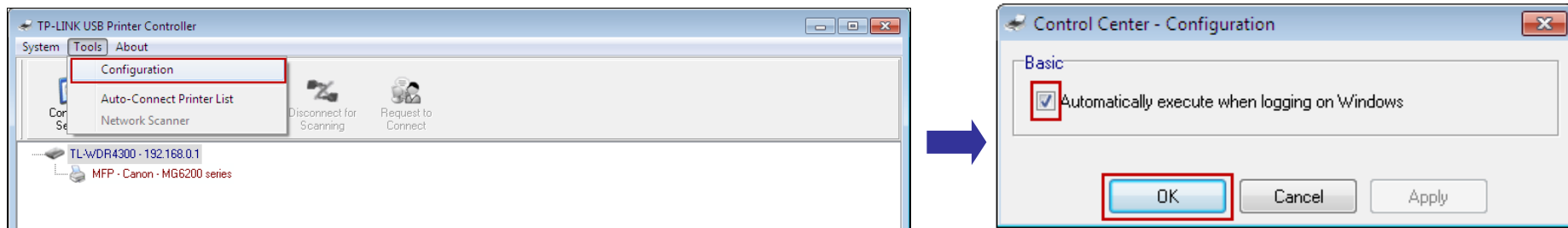
**Step 4:** If the other user **Accepts** your request to connect, please click **Exit** to start your printing or scanning task.



### 4.2.3 Other functions/ settings

#### ➤ Configuration

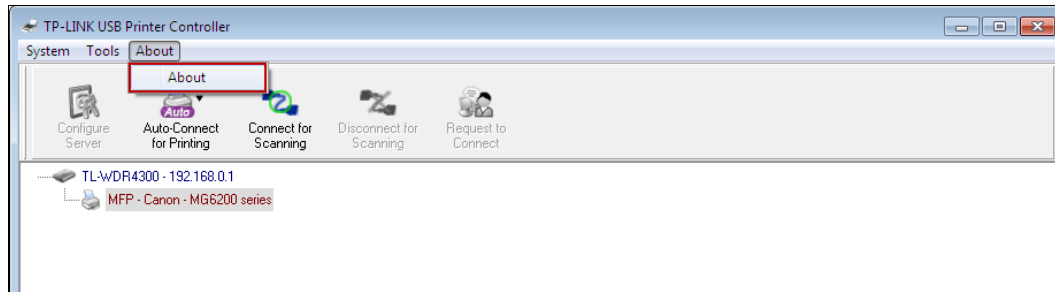
Go to **Tools-> Configuration**, tick the option *Automatically execute when logging on Windows*, and then click **OK**.



With this setting, the TP-LINK USB Printer Controller will run automatically every time you log on your computer.

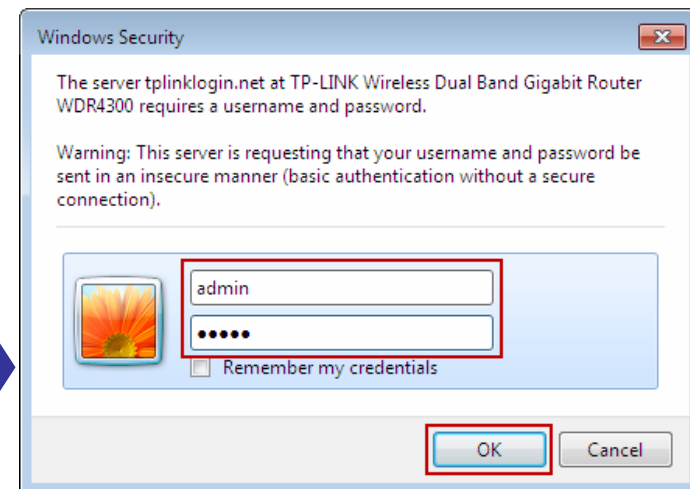
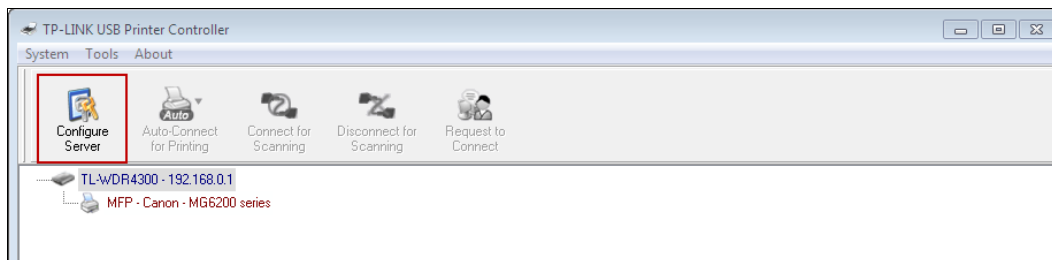
#### ➤ About

Go to **About -> About**, a window will pop up and display some relevant information about this Control Center.



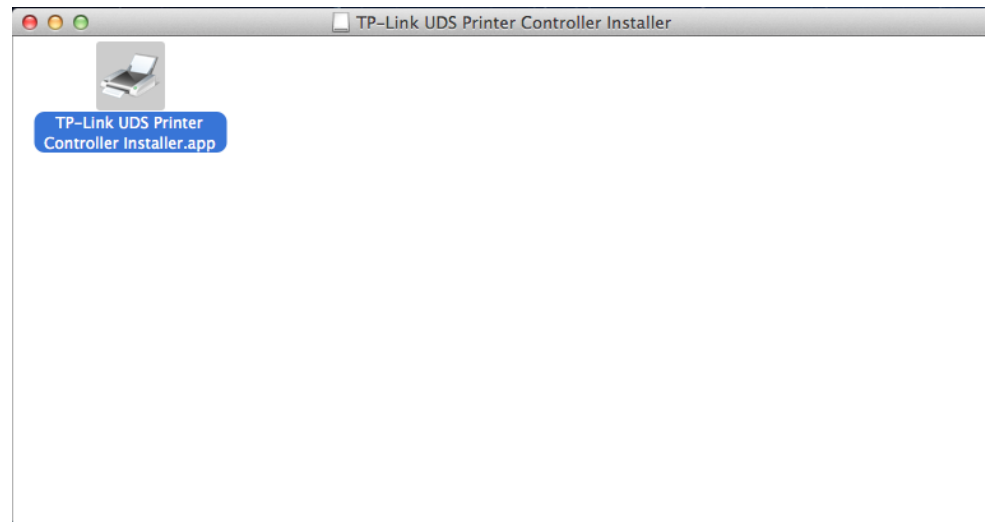
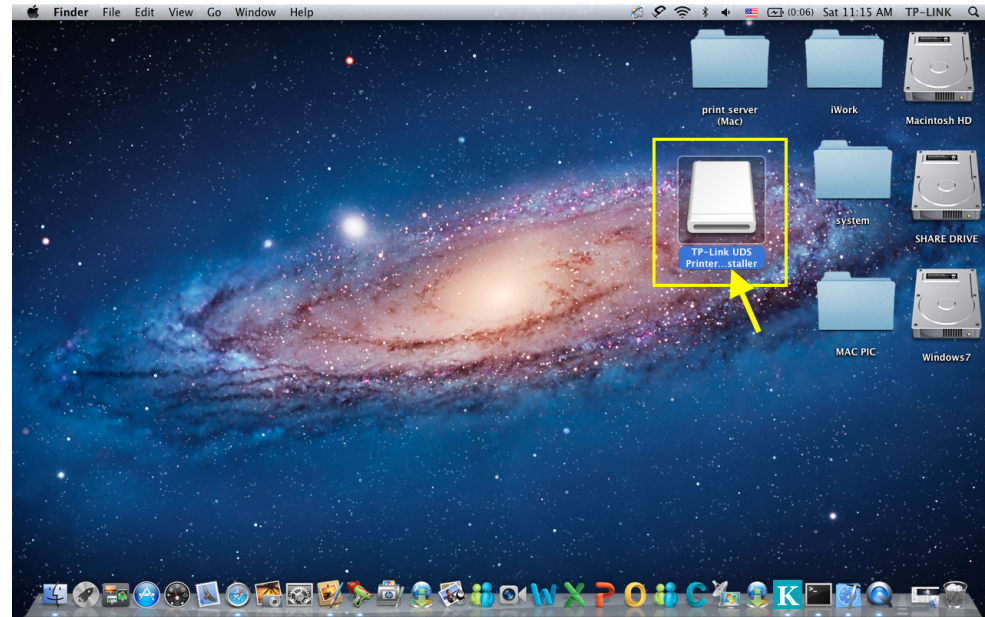
➤ **Configure Server**

Highlight the Router and click the tab **Configure Server**; the login window of the Router will pop up. You need to enter the user name and password (both are **admin** by default.) to log in the web-based management page of the Router.

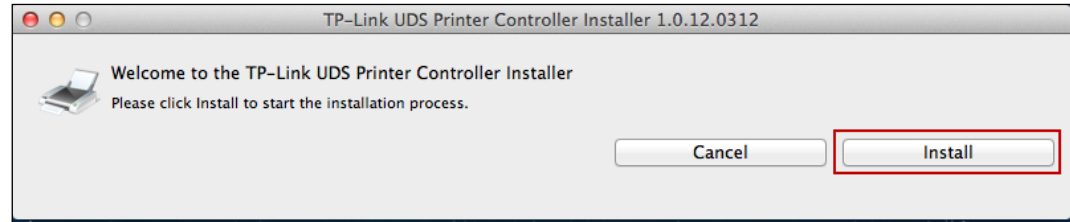


## Chapter 5. Installation for Mac OS

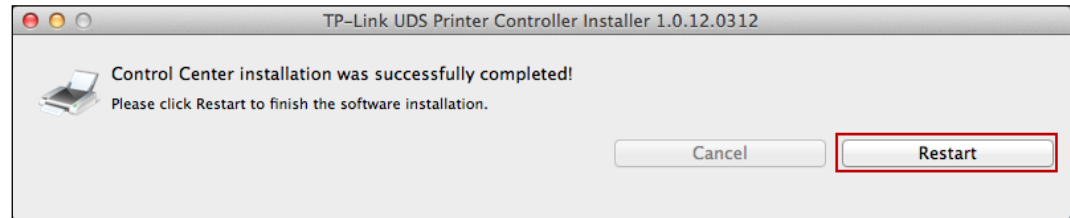
1. Download the setup software **TP-Link UDS Printer Controller Installer.dmg** from our website: [www.tp-link.com](http://www.tp-link.com).
2. Double-click the software you've downloaded.
3. Double-click the **TP-Link UDS Printer Controller Installer.app** in the window that pops up.



4. Click ***Install*** to start the installation process.




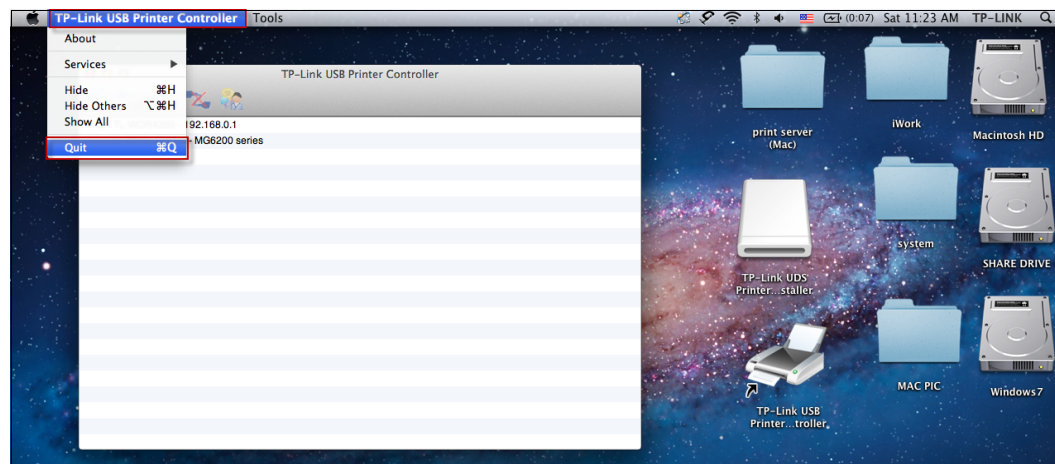
5. Click ***Restart*** to finish the software installation.




## Chapter 6. Application for Mac OS

### 6.1 To Launch/Exit the TP-LINK USB Printer Controller

- To launch the USB Printer Controller, double-click the icon  on your desktop.
- To exit the USB Printer Controller, you have two ways:
  - Click **TP-Link USB Printer Controller -> Quit**, when the printer controller is on the process. Or you can press the keyboard **command + Q** to quickly exit the controller.



- Left-click and hold the icon  in the dock for a while, then you can click **Quit** to exit the controller.



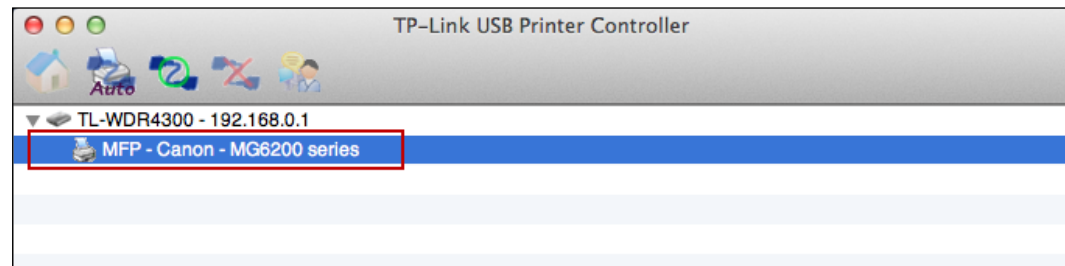
## 6.2 To Utilize the TP-LINK USB Printer Controller

### 6.2.1 To Print

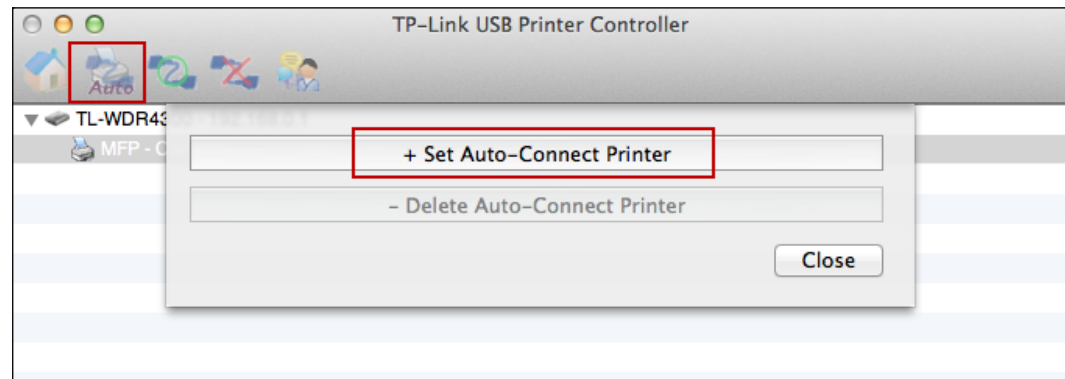
To print, first of all, you need to set your **Auto-Connect Printer**. After successful setting, you can execute your printing tasks automatically.

Please follow the steps below to set your auto-connect printer.

**Step 1:** Highlight your printer.

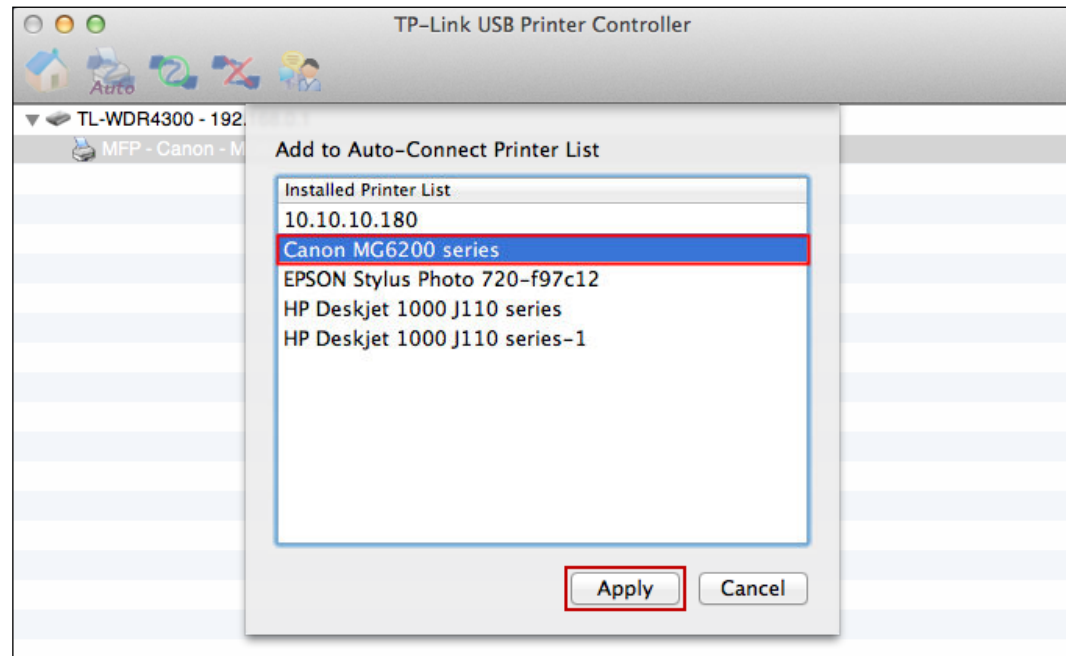


**Step 2:** Click the tab **Auto-Connect for printing** to pull down a list, where you can select **Set Auto-Connect Printer**.

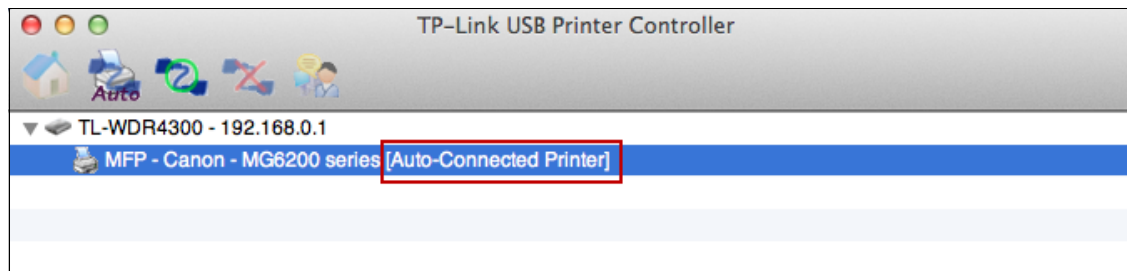




**Step 3:** Select the printer you would like to set as auto-connect printer, and then click the **Apply** button.



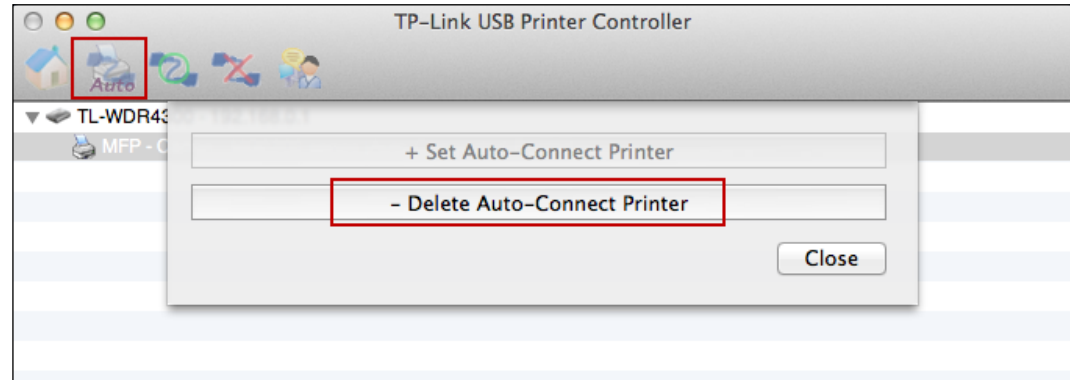
After successful setting, you will see the printer marked as **Auto-Connect Printer**. Then you can execute your printing task freely.



➤ If you want to disable your printer's auto-connect function, you can delete it.

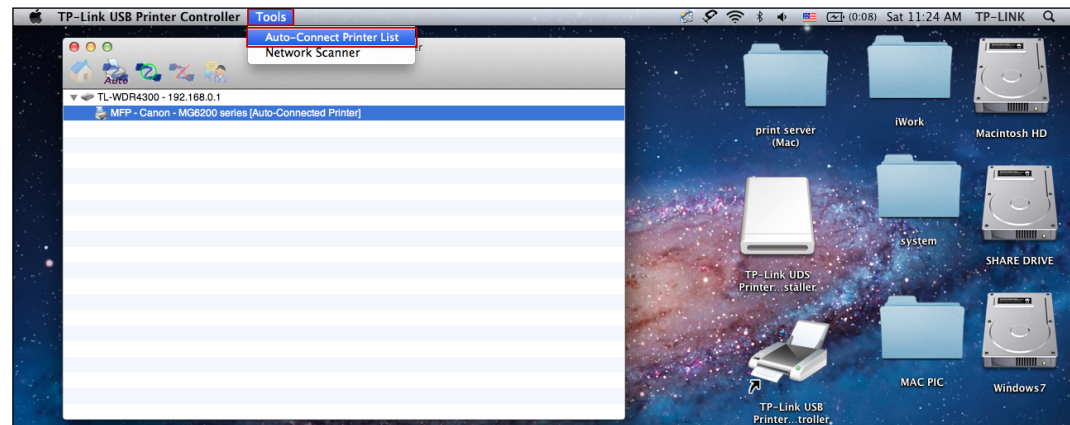
**Method One:**

Select **Delete Auto-Connect Printer** from the drop-down list of the tab **Auto-Connect for Printing**.

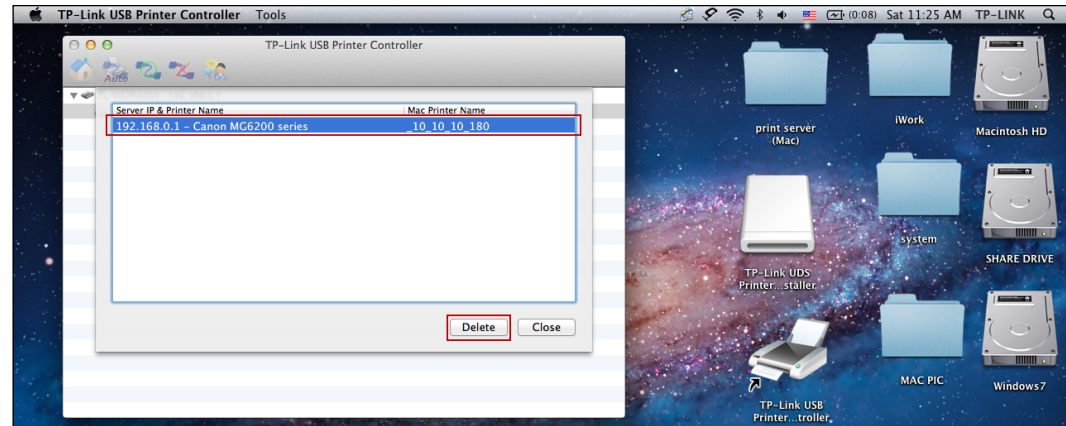


**Method Two:**

1. Go to **Tools->Auto-Connect Printer List**.



2. Highlight your auto-connect printer and then click **Delete**.

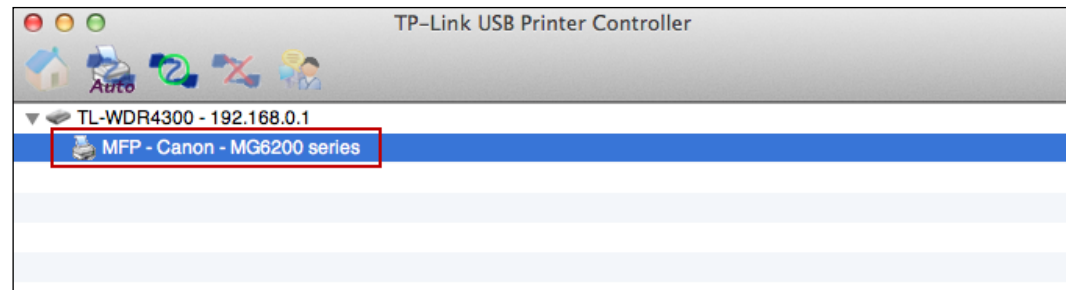


## 6.2.2 To Scan

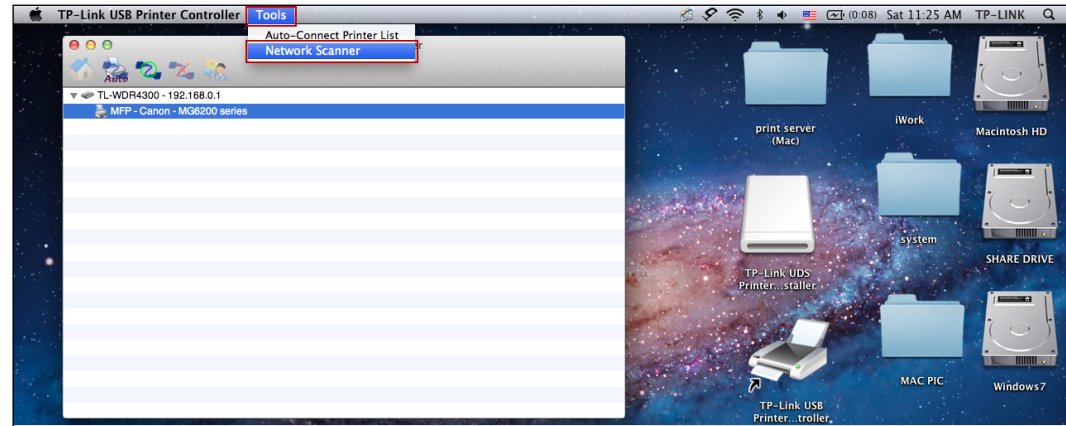
There are two methods available to realize the scanning function.

### Method One: Network Scanner

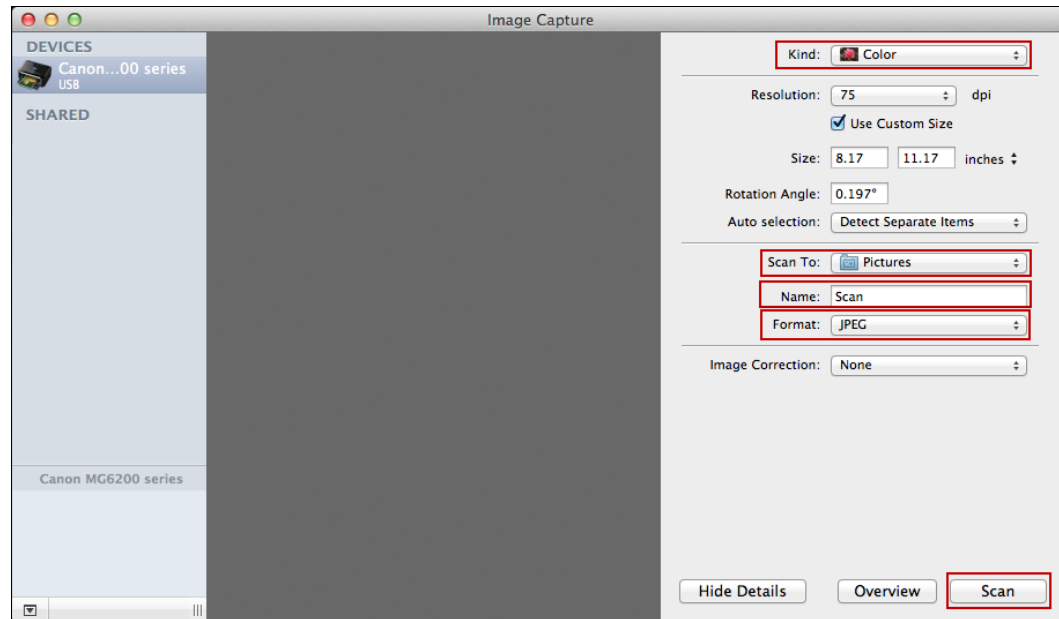
**Step 1:** Highlight your scanner or MFP.



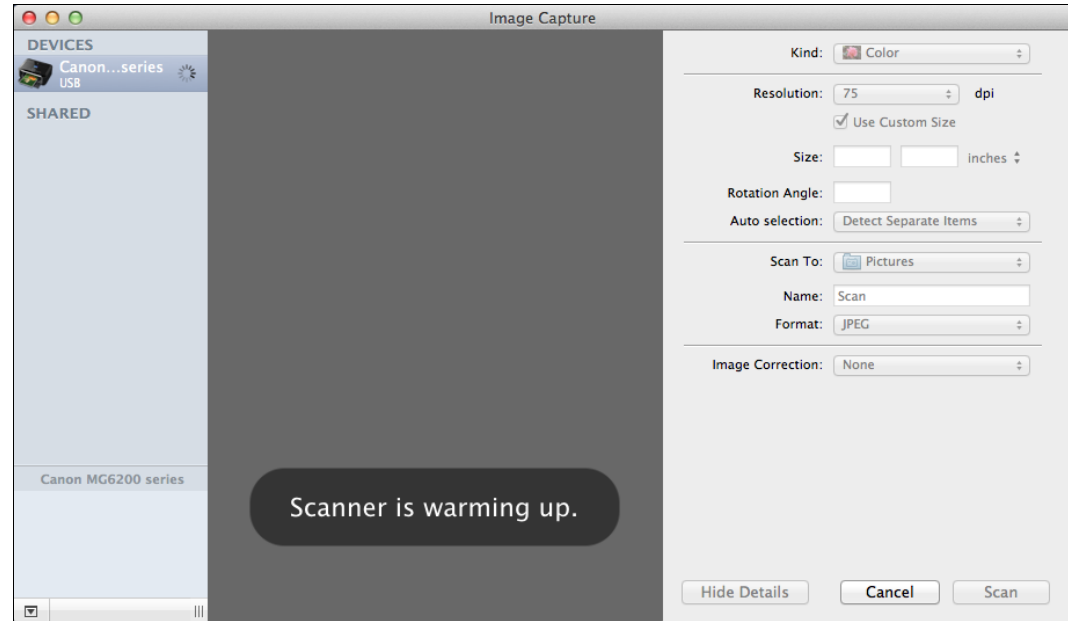
**Step 2:** Click *Tools* and then select *Network Scanner*.



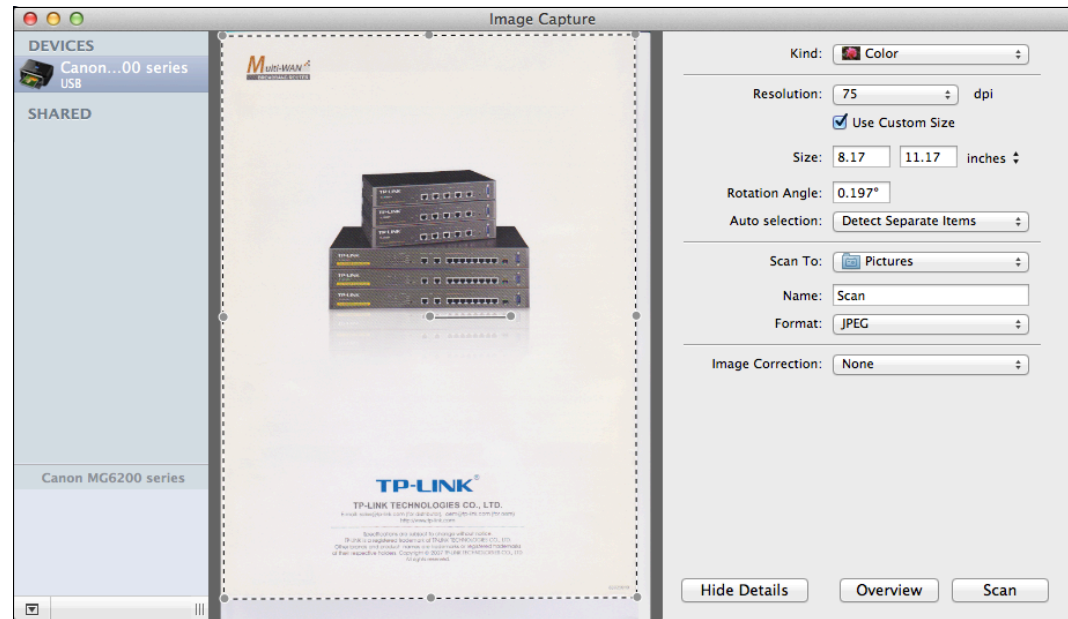
**Step 3:** Select the kind of picture you want to scan and the destination you want to save it; name your picture and select the format of it. Then click *Scan*.



**Step 4:** Wait a while for the scan process.



**Step 5:** When it is completed, you will see the scan result shown in the middle. Then go to the location you've chosen in the previous **Step 3** and find your picture scanned.

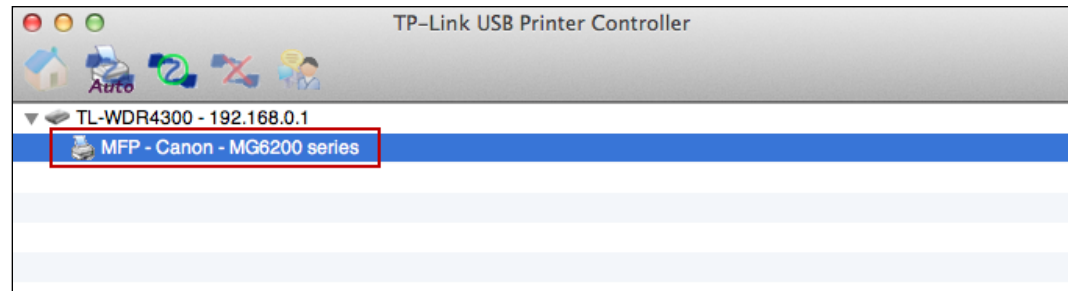


**Method Two: Connect for Scanning**

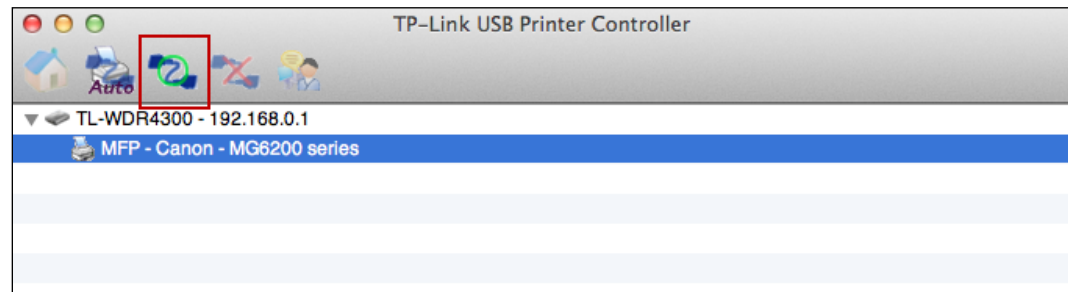
**Note:**

If you choose this method for scanning, no one else in your LAN can share the scanner or MFP to either print or scan, until you click the tab **Disconnect for Scanning** to release it or accept their **Request to Connect**.

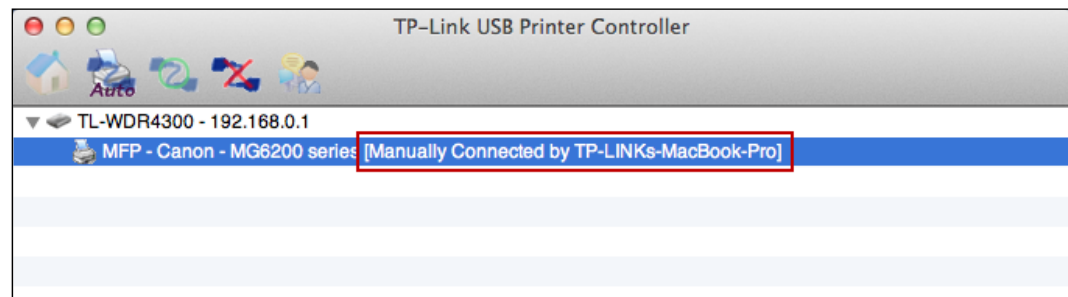
**Step 1:** Highlight your scanner or MFP.



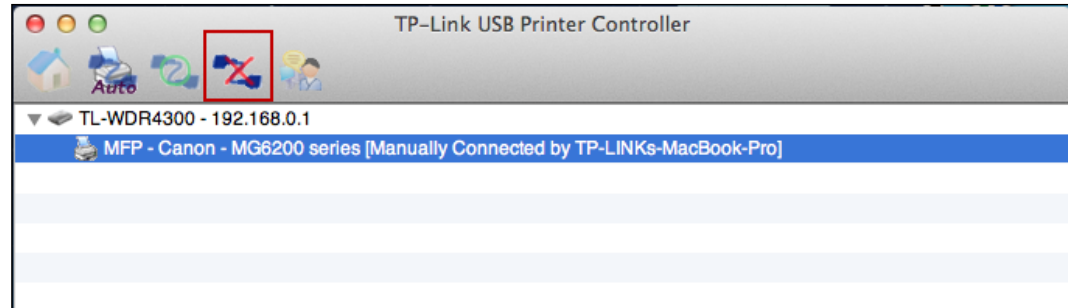
**Step 2:** Click the tab **Connect for Scanning**.



Successfully set and ready for scanning, it will display **Manually Connected by...**, when you can start your scan task.



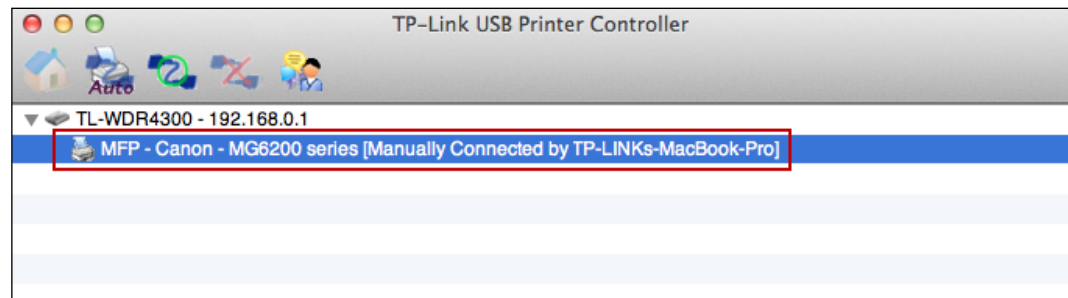
**Step 3:** After finishing your scan task, please do remember to click the tab **Disconnect for Scanning** to release the scanner or MFP.



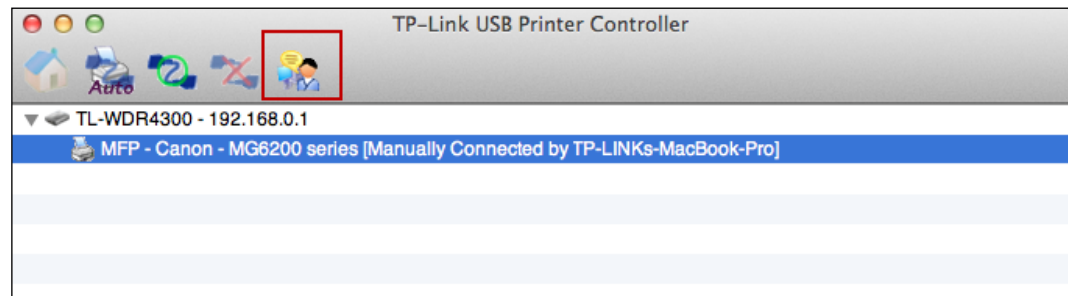
➤ **Request to Connect**

When one computer in your LAN **Connects for Scanning**, it is occupying the scanner or MFP; then if you would like to use it as well, you will have to **Request for Connect**.

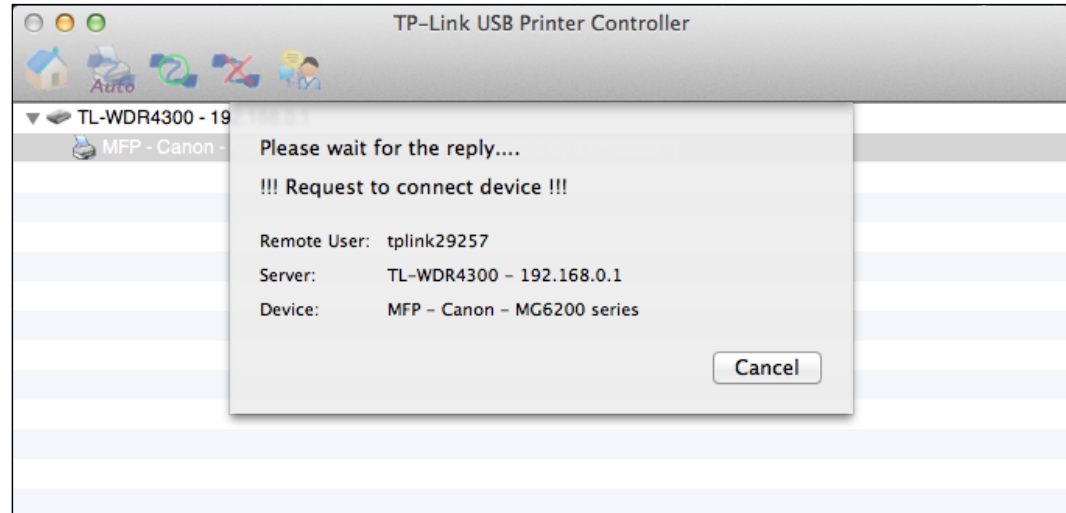
**Step 1:** Highlight the scanner or MFP you want to share for printing or scanning.



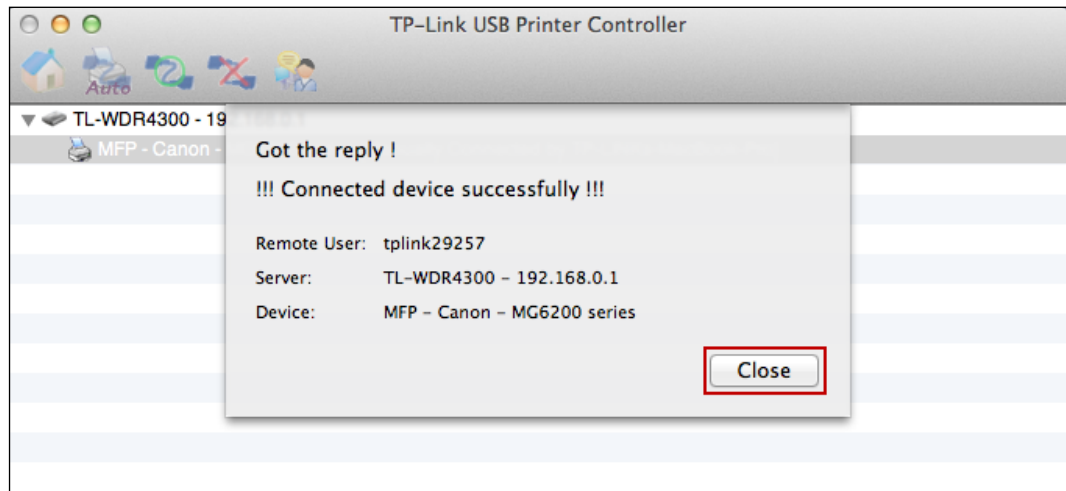
**Step 2:** Click the tab **Request to Connect**.



**Step 3:** You will be prompted a window that transmits your request. Please wait patiently for the reply.



**Step 4:** If the other user **Accepts** your request to connect, please click **Close** to start your printing or scanning task.





### 6.2.3 Other functions/ settings

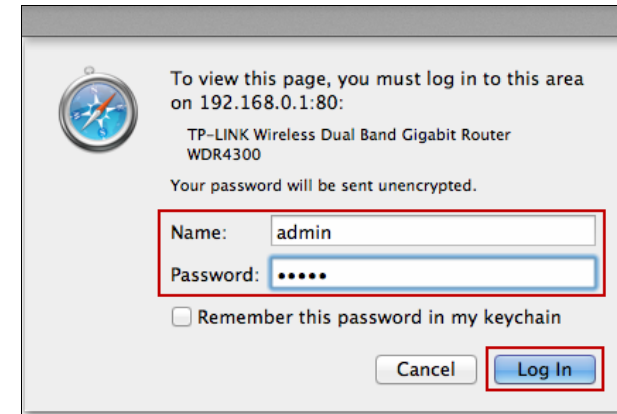
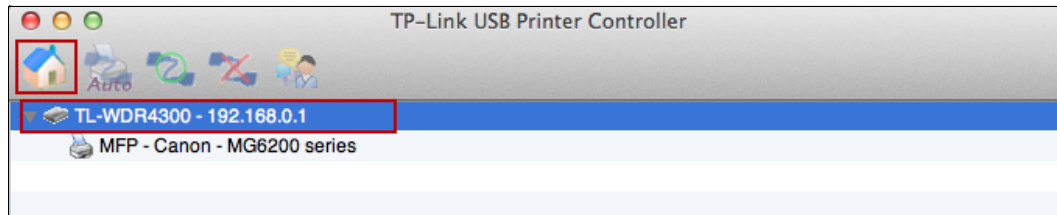
➤ **About**

Go to **TP-Link USB Printer Controller -> About**; a window will pop up and display some relevant information about this printer controller.




➤ **Configure Server**

Highlight the Router and click the tab **Configure Server**, the login window of the Router will pop up. You need to enter the user name and password (both are **admin** by default.) to log in the web-based management page of the Router.



➤ **Open at Login**

Left-click and hold the icon  in the dock for a while, until you can select **Option > Open at Login**.

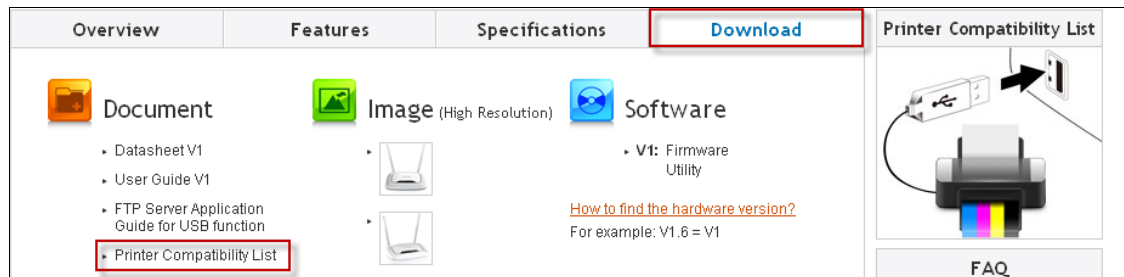


With this setting, the TP-LINK USB Printer Controller will run automatically every time you log on your Mac.

# Appendix: Troubleshooting

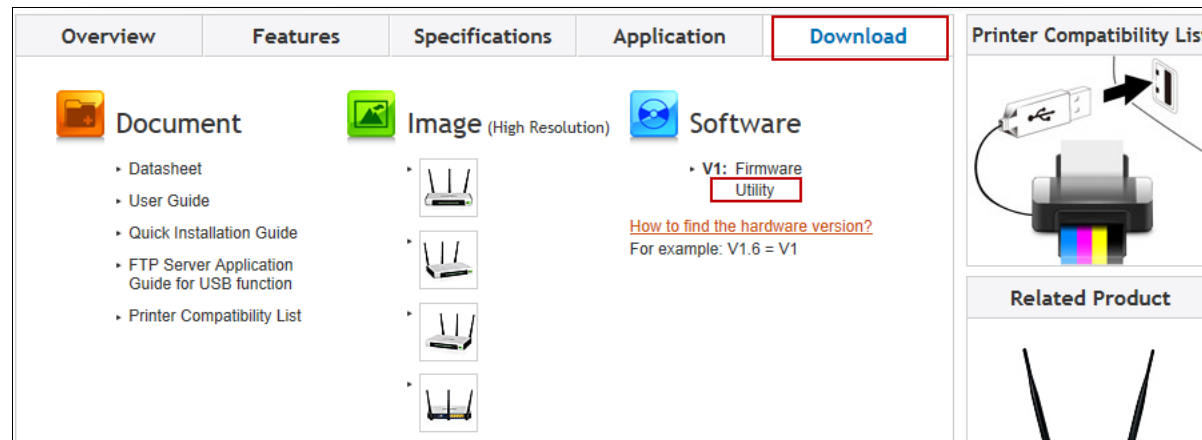
## 1. Where can I find the printer compatibility list?

Go to our website [www.tp-link.com](http://www.tp-link.com), then go to **Products** ->**Wireless**, find your product model and go to **Download** -> **Document** -> **Printer Compatibility List**.



## 2. Where can I find the relevant software for installation?

Go to our website [www.tp-link.com](http://www.tp-link.com), then go to **Products** ->**Wireless**, find your product model and go to **Download** ->**Software** -> **Utility**. Then next web page will be loaded, where you can select the **USB Printer Controller\_Utility** and download it.



Utility		
<a href="#">TL-WDR4300_V1_USB Printer Controller_Utility</a> ↓	Published Date	11/29/2012
	Language	English
	File Size	7.29 MB
	Operating System	Win XP/Vista/7/8
	Notes	For TL-WDR4300 V1
<a href="#">TL-WDR4300_V1.0_EasySetupAssistant</a> ↓	Published Date	8/10/2012
	Language	English
	File Size	9.25 MB
	Operating System	WinXP/Vista/7
	Notes	For Windows only

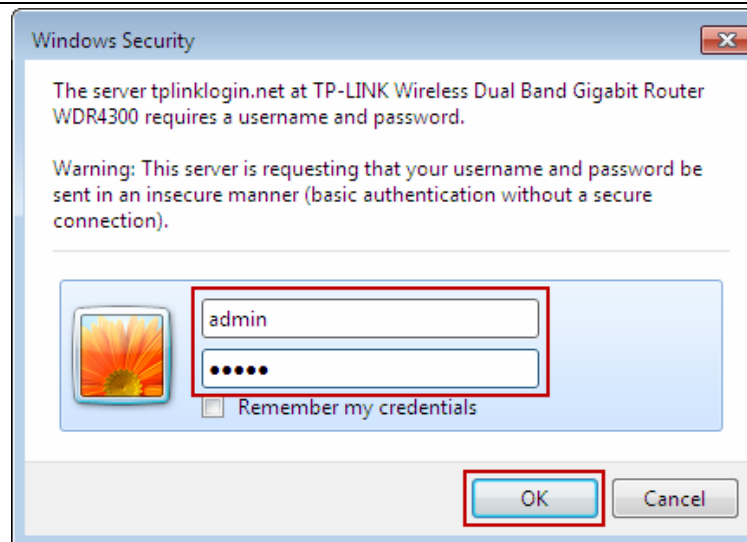
### 3. How to manage the print server on the web-based management page?

The Router's Print Server function is enabled by default. To disable the function, you need to log onto the Web-based management page. See the following instructions (Here takes that in Windows 7 for example):

- 1) Make sure you have a PC or notebook connected to the wireless Router, either via wireless or wired connection.
- 2) Launch the TP-LINK USB Printer Controller, highlight the Router and click the tab **Configure Server**.



- 3) After a moment, a login window will appear. Enter **admin** (in lower case letters) for both the User Name and Password. Then click the **OK** button or press the **Enter** key.



4) Go to **USB Settings -> Print Server**. Clicking **Stop** will disable the function and clicking **Start** will enable it.

