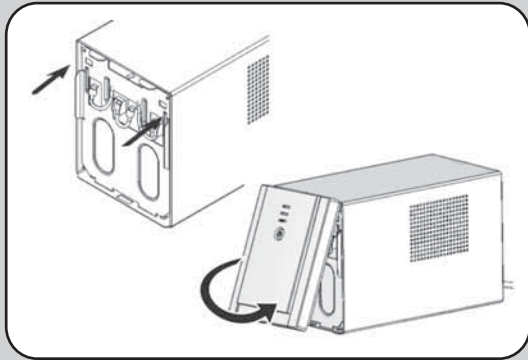
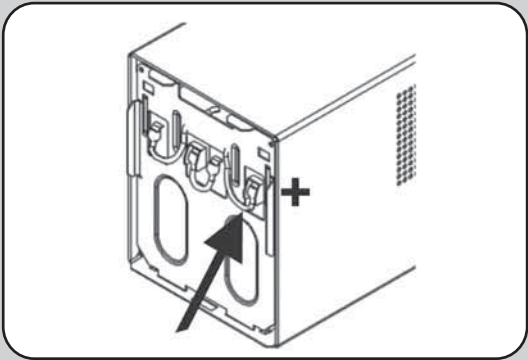
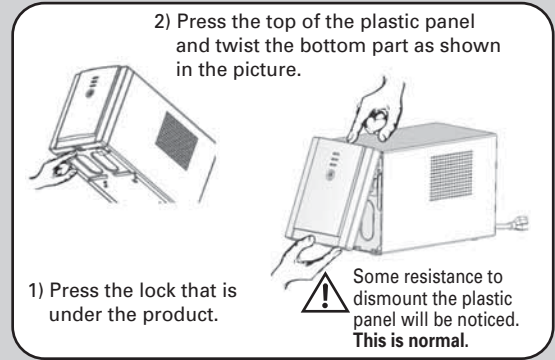


Connect Battery

For your security, Back-UPS RS is provided with the battery cable disconnected. The UPS only will work after the cable is connected to the battery terminal.

NOTE: Small sparks may occur during battery connection.
Before connecting the battery, unplug the Back-UPS from wall outlet and also all equipment connected to the UPS. This is not a hot swap unit.

- 1 Press the lock that is under the UPS and pull the bezel at the bottom.
- 2 Connect the battery cable to its terminal (positive pole)
- 3 Engage the superior part of the panel in the holes and gently push it till it locks.



Connect the Equipment

Place the Back-UPS to avoid:

- Direct sunlight;
- Excessive heat;
- Excessive humidity or contact with fluids.

If you want to use the management function of your Back-UPS, you shall acquire the communication kit (part number AP9937).

The supplied cable and software provide automatic file saving and shutdown of the operating system in the case of a sustained power outage.

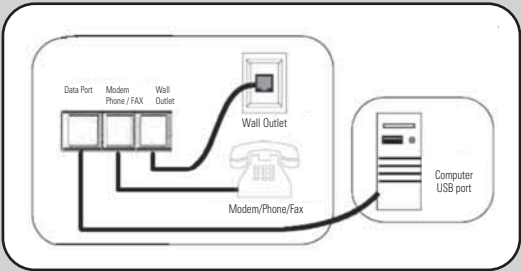
If you have the communication kit, connect the interface cable to the data port at the Back-UPS rear and the other end of the cable to the USB port of your computer.

Connect Fax / modem (ADSL) / phone

Back-UPS RS protects a single line (2-wire) fax, modem or phone from surges when it is connected through the Back-UPS RS as shown.

Battery Back-up plus Surge Protection

These outlets are powered whenever the Back-UPS RS is switched ON. During a power outage or other utility problems (brownouts, over-voltages), these outlets will be powered for a limited time by the Back-UPS RS. Plug your computer, monitor, and one other data-sensitive device (external disk or tape drive) into these outlets.



Switch on your Back-UPS RS

Press the ON/OFF switch to power the unit. This will initiate an automatic test.

A single short beep and the green On-Line indicator confirms that Back-UPS is on and ready to protect your equipments. The Back-UPS RS is on and ready to provide protection.

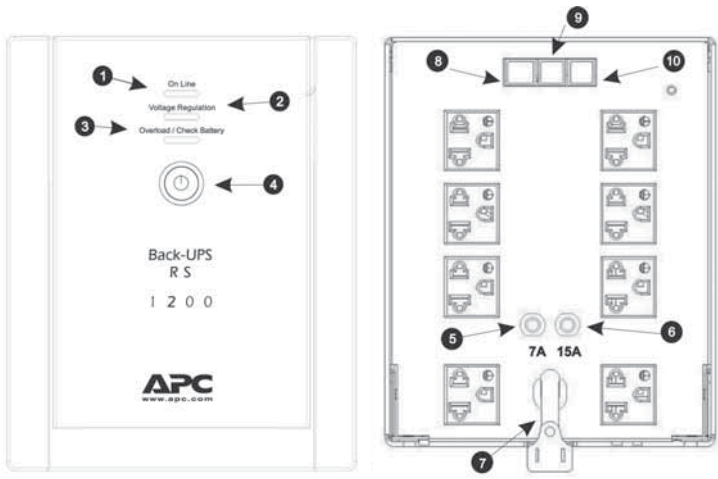
The Back-UPS RS should charge for at least 12 hours to ensure sufficient runtime. The unit is being charged whenever it is connected to utility power, whether the unit is turned ON or OFF.

In case you have the AP9937 Communication Kit, install PowerChute Personal Edition® software

To install the software, insert the CD-ROM into the drive and follow the on-screen instructions. Refer to the software documentation to get further using instructions and functionality.

Operation indication

The Back-UPS RS indicates operating status using a combination of audible and visual indicators (leds). Refer to the "Troubleshooting" section to get further information.



Frontal

Rear

Legend:

- 1 – Power LED
2 – Tension adjustment LED
3 – Overloaded/verify LED
4 – Power switch
5 – 220V Circuit breaker
- 6 – 110V Circuit breaker
7 – Power cable
8 - Data Port
9 - Modem / Phone / Fax Port
10 -Wall Outlet

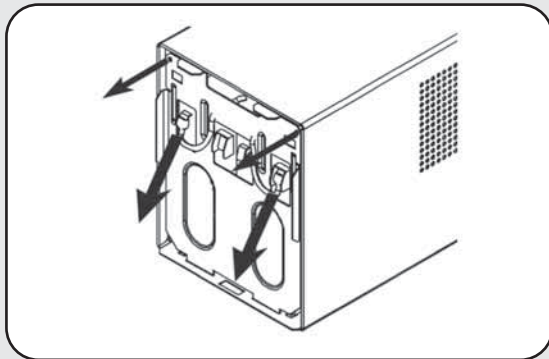
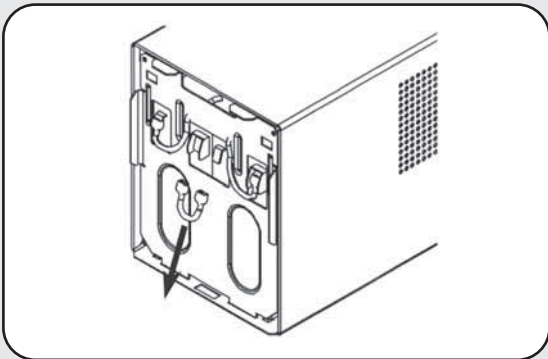
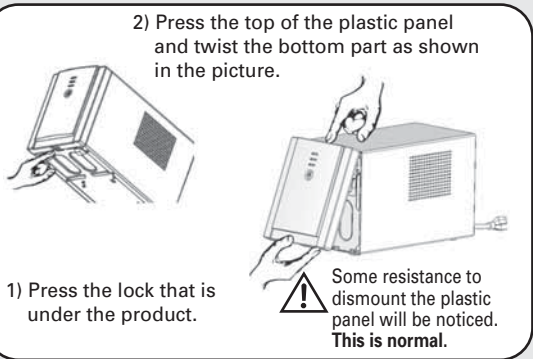
Status	Indicación Visual / Audible	Definición
Online – Operation is normal (Green indicator).	Led on. Beeping 4 times every 30 seconds. Beeping once every second.	The utility power is on security levels. UPS is running on battery mode and utility power is not available at the power outlet. UPS will shutdown in one minute.
Voltage Regulation – (Yellow indicator).	Led on.	The power from the utility power is above or under the range specified for product. UPS is automatically regulating voltage for security levels.
Overload – (Red indicator)	ELed on, constant tone	UPS is overloaded: disconnect part of the load connected.
Check battery	Flashing once every second.	The battery automatic test was not successfully completed or battery is disconnected. Consult "troubleshooting" section.

Replacing the battery

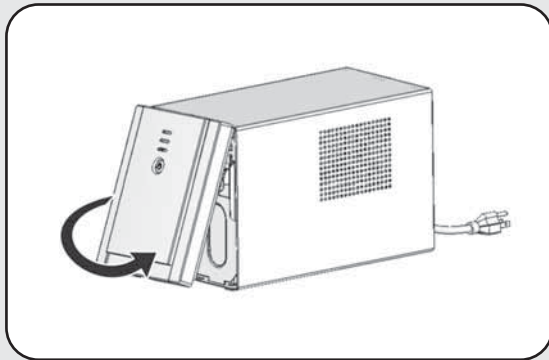
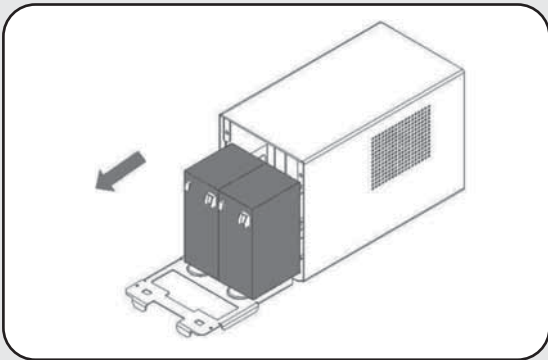
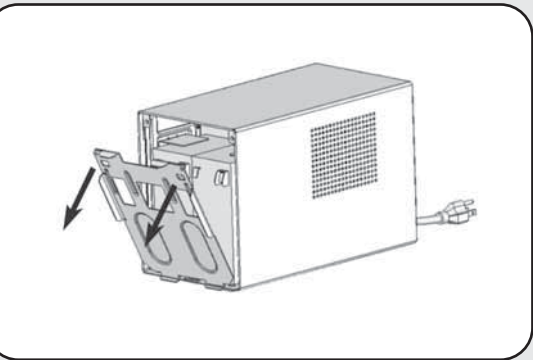
When Back-UPS indicates the need of replacing battery, you should order an APC certified battery pack and proceed as following described:

NOTE: Small sparks may occur during battery connection.
Before connecting the battery, unplug the Back-UPS from wall outlet and also all equipment connected to the UPS. This is not a hot swap unit.

- 1 Press the lock that is under the UPS and pull the bezel by the bottom.
- 2 Disconnect the central wires and the protection fuses from battery terminals.
- 3 Disconnect the battery and, then, unscrew the frontal metallic panel



- 4 Turn the cap down and remove it.
- 5 Remove battery package from the product and replace it. UPS is supplying battery power to the load connected to the Battery outlets.
- 6 Reconnect all cables in the inverse order of disassembling. Engage the metal cap and screw it again. Engage the plastic panel superior part and press it softly on rear until it locks.



Troubleshooting

Use the table below to solve minor Back-UPS RS installation or operation problems. Consult APC on-line support or call APC Technical Support for assistance with problems that cannot be resolved using the table below.

Problem	Possible Cause	Corrective Action
Back-UPS RS do not switch on.	Battery is disconnected and/or Unit is not connected to the power source.	Connect the battery (Consult Connect the Battery section) and ensure that is connected on ac outlet.
Connected equipment out off power.	Circuit suit is tripped off	Reduce number of equipment connected to UPS outlets. Retrip the circuit breaker, pushing in it.
Equipment is connected to power	Back-UPS is heavily loaded. PowerChute Personal Edition software executed UPS automatic shutdown Back-UPS RS discharged available power of your battery. Equipment does not accept sinusoidal waves because of UPS approximation.	Ensure the equipment switched on UPS outlets are not overloading its capacity. Disconnect some equipment if necessary. It is a regular operation. Reset software. Back-UPS only can run with battery power during a limited period. UPS will be shutdown when available battery power is totally empty. Recharge for 12 hour before continue to use them. Batteries are recharged when the UPS is connected to power source. The Back-UPS battery wave outs were designed for computers and peripherals, not for equipment with motor.
Back-UPS beep 4 times every 30 seconds	Back-UPS is using the battery to provide power to connected equipment.	Back-UPS is using the battery to provide power to connected equipment. UPS is regularly working. You have to save your documents, shutdown your equipment and the UPS. When the power supply regularly return on, you can restart the UPS and your equipment.
The power indicator is on and Back-UPS RS is buzzing with continuous and short tones.	UPS is overloaded	Disconnect non-essential equipment
The overload/verify battery indicator flashes and Back-UPS RS buzzes with continuous and short tones.	Unit could be not correctly connected. Batteries must be charged. Battery has reached the end of its useful life.	Consult “Connect the Battery” section. Recharge UPS, at least, 12 hours. Restarting the UPS, an automatic test will be run. If the overload/verify battery indicator still flashing and beeping a continuous and short tons after the automatic test, batteries must be replaced.

Specifications

Item	Specification
Surge capacity (8 outlets)	12 Amps (including outlet UPS)
Voltage on battery	115 Vac ms+/- 6%
Frequency on battery	60 Hz+/- 1Hz
Transfer time	5 ms typical
AC surge protection (Full time)	450 joules
Telephone surge protection	1 line (2 wires)
EMI/RFI filter	Full time
UPS for overload protection	UPS automatically shuts down if exceeds 110% of evaluated nominal
Circuit breaker resettable of AC input	7A(22AV) / 15 A(115v)
Battery type	Sealed, maintenance-free lead acid
Average life	2 to 4 years, depending on number of discharge cycles and enviromental temperature.
Recharge time	Usually 12 hours, maximum of 16 hours
Net weight	33 lb 15,0 kg
Size (HxWxD)	7.87x6.50x13.0 inch 20.0x16.5x33.0 cm
Operating temperature	+32° to 104°F 0° to 40°C
Storage temperature	+5° to 113°F 15° to 45°C
Operating relative humidity	0 to 95% non-condensing
Operating elevation	0 to 10000 feet 0 to 3000m
Input nominal voltage and adjustment range	86 – 149 Vac (115V) 170-260Vac(220V)
Output voltage and adjustment range	115V+/-6%
Nominal power	1200VA / 600 W

Warranty

The standard warranty is 2 years from the date of purchase. APC’s standard procedure is to replace the original unit with a factory reconditioned unit. Customers who must have the original unit back due to assigned asset tags and set depreciation schedules must declare such a need at first contact with APC Technical Support. APC will ship the replacement unit once the defective unit is received by the repair department or cross-ship upon the provision of a valid credit card number. The customer pays for shipping to APC, and APC pays ground freight transportation costs back to the customer.

How to buy a AP9937 Communication Kit

The AP9937 Communication Kit can be purchased at any APC dealer or local dealer.

How to order replacement battery

New package battery can be bought from your local dealer. Hold your Back-UPS RS model number that can be found on rear part of the equipment. Use always APC certified batteries.



Battery must be recycled. Please delivery spent batteries on APC reseller.



Service

Note: UPS detailed specifications are available on www.apc.com/br.

 Please DO NOT RETURN Back-UPS RS to the place of purchase under any circumstances.

- 1. Consult the “Troubleshooting section” to eliminate common problems.
- 2. Verify the battery is connected according to “Connect the Battery” and that the Circuit Breaker is not tripped (see “Troubleshooting section”).
If you still have questions, please contact APC via www.apc.com/br or at one of the phone numbers listed below.
- 3. Before contacting APC, please be sure to keep at hands the date purchased, UPS model, and serial number (on rear part of unit).
- 4. If necessary, Technical Support Representative will issue a Return Material Authorization Number (RMA#).
- 5. Pack the unit properly to avoid shipment damage. Never use foam beads for packaging. Damage sustained in transit is not covered under warranty (insuring the package for full value is recommended).

APC Contact Information

USA/Canada1.800.800.4272
Mexico+52.292.0253 / 52.292.0255
Brazil+0800.555.272
Worldwide+1.401.789.5735
Web Sitewww.apc.com/br
Online Technical Support<http://support.apc.com>